



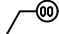




DRAWING SHEETS INDEX			
PAGE	DESCRIPTION		
C1	COVER SHEET/HARDWARE SCHEDULE		
F1	FLOOR PLAN		
E1	WINDOW ELEVATIONS	D1	DETAILS
E2	WINDOW ELEVATIONS	D2	DETAILS
E3	WINDOW ELEVATIONS	D3	DETAILS
E4/E4A	WINDOW ELEVATIONS	D4	DETAILS
E5	WINDOW ELEVATIONS	D5	DETAILS
E6/E6A	WINDOW ELEVATIONS	D6	DETAILS
E7	WINDOW ELEVATIONS	D7	DETAILS
E8	WINDOW ELEVATIONS	D8	DETAILS
		D9	DETAILS
		D10	DETAILS
		D11	DETAILS
		D12	DETAILS
		D13	DETAILS

GLASS SPECIFICATIONS	
GL-1A: 1" CRYSTAL GREY INSULATED W/ VIRACON VRE-54 LOW-E 1/4" CRYSTAL GREY TEMPERED W/ VRE-54 ON #2 1/2" AIRSPACE W/ MILL FINISH SPACER BAR 1/4" CLEAR TEMPERED	
GL-1B: 1" CRYSTAL GREY LAMINATED INSULATED W/ VIRACON VRE-54 LOW-E 1/4" CRYSTAL GREY TEMPERED W/ VRE-54 ON #2 3/8" AIRSPACE W/ MILL FINISH SPACER BAR 3/8" CLEAR LAMINATED W/ .030 CLEAR INTERLAYER	
GL-2: 3/8" CLEAR TEMPERED GLASS	
GL-3: SUPERLITE II XL 45 MINUTE RATING	
GL-4: MIRRORS	

DOOR HARDWARE SCHEDULE	
SET 01:	DOORS 5 & 8
SET 02:	DOORS 12
SET 05:	DOORS 6
SET 06:	DOORS 7 & 9
SET 14:	DOORS 17A & 40
SET 18:	DOORS 23
SET 25:	DOORS 45
SET 31:	DOORS 2 & 3

SUBMITTAL RECORD	
DATE	DESCRIPTION

REVISION HISTORY	
DATE	DESCRIPTION
10/17	RETURNED SHOP DRAWINGS

ABBREVIATIONS	
	WINDOW
	DOOR
	FLOOR PLAN NOTES
	WALL SECTION
	TARGET ELEVATION
	CW DEADLOAD ANCHOR LOCATION
	CW WINDLOAD ANCHOR LOCATION

GENERAL NOTES	
1) ALL ELEVATIONS TO BE CLASS I/II CLEAR ANODIZED ALUMINUM	
2) ALL METAL TO METAL JOINERY SHALL BE FULLY SEALED DURING SYSTEM ASSEMBLY	
3) ALL ALUMINUM IN CONTACT WITH MASONRY OR OTHER DISSIMILAR MATERIALS SHALL BE SEPARATED WITH VINYL TAPE OR POLYSTYRENE SHIMS	
4) THE WINDOW SYSTEM SHALL BE INTERNALLY SEALED AND WEEDED TO CONTAIN AND DRAIN ALL CONDENSATION, MIGRATORY WATER OR WATER ENTERING JOINTS	
5) ALL BLOCKING, PLATES, OR OTHER STRUCTURAL MATERIAL AT WINDOW OPENINGS BESIDES POLYSTYRENE SHIMS OR GLAZING TAPE TO BE PROVIDED BY OTHER UNLESS SPECIALLY PROVIDED FOR IN SCOPE	
**ALL OPENINGS AND FRAMES SUBJECT TO FIELD VERIFICATION **	

DESIGN CRITERIA	
SEALANT COLOR TO BE SPECIFIED BY GENERAL CONTRACTOR OR ARCHITECT BREAK METAL TO MATCH STOREFRONT ORIGINAL ARCHITECTURAL EXTERIOR PAGES INCLUDED TO HELP SHOW WINDOW LAYOUT PAGES AT END OF SHOP DRAWINGS	

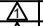

SYSTEM DESCRIPTION	
ARCADIA - ASL451 1 3/4" X 4-1/2" CENTER GLAZED STOREFRONT FINISH: CLASS II CLEAR ANODIZED	
ARCADIA - AR450+ 2" X 4-1/2" CENTER GLAZED STOREFRONT FINISH: CLASS II CLEAR ANODIZED	
ARCADIA - OPG6000 SERIES 2-1/4" X 6" CURTAINWALL SYSTEM FINISH: CLASS II CLEAR ANODIZED	
SAFTI-FIRST - GPX 250 SERIES 45 MIN. FIRE RATED STOREFRONT FINISH: CLASS II CLEAR ANODIZED	
ARCADIA - 2820 SLIDING STACKING DOOR SYSTEM FINISH: CLASS II CLEAR ANODIZED	
SAFTI-FIRST - GPX 500 SERIES 45 MIN. FIRE RATED DOORS FINISH: CLASS II CLEAR ANODIZED	
ARCADIA - MEDIUM STILE STOREFRONT DOOR W/ 10" BOTTOM RAIL FINISH: CLASS II CLEAR ANODIZED	

MIRROR SCHEDULE			
A-117:	2 @ 41"W X 57-1/2"H	A-138:	1 @ 66"W X 57-1/2"H
A-118:	2 @ 51"W X 57-1/2"H		1 @ 42"W X 57-1/2"H
	1 @ 24"W X 72"H	A-140:	1 @ 24"W X 57-1/2"H
A-133:	3 @ 39"W X 57-1/2"H	T-001:	1 @ 24"W X 57-1/2"H
A-134:	1 @ 24"W X 57-1/2"H		
A-135:	2 @ 31"W X 57-1/2"H		
	2 @ 62"W X 57-1/2"H		
	1 @ 48"W X 57-1/2"H		
	1 @ 24"W X 72"H		



www.arizonaglassspecialists.com  
3164 COUNTRY CLUB DR. SUITE #5  
MESA, AZ 85210

This document and the drawings herein are provided with the understanding and agreement that the recipient will not reproduce same or manufacture using the information contained herein without prior written permission of ARIZONA GLASS SPECIALISTS and that all rights in the document and the exclusive and confidential property of ARIZONA GLASS SPECIALISTS.  
ARIZONA GLASS SPECIALISTS will not be responsible for any such errors omissions and/or work that accrues from the use of these drawings by other trades.

REVISIONS	
	PER ARCH COMMENTS
	PER ARCH COMMENTS

PROJECT TEAM INFORMATION			
GENERAL CONTRACTOR	HAYDON BUILDING CORPORATION	ARCHITECT	DOUGLAS ARCHITECTURE AND PLANNING
OWNER	SOUTH EAST VALLEY REGIONAL ASSOC. OF REALTORS		

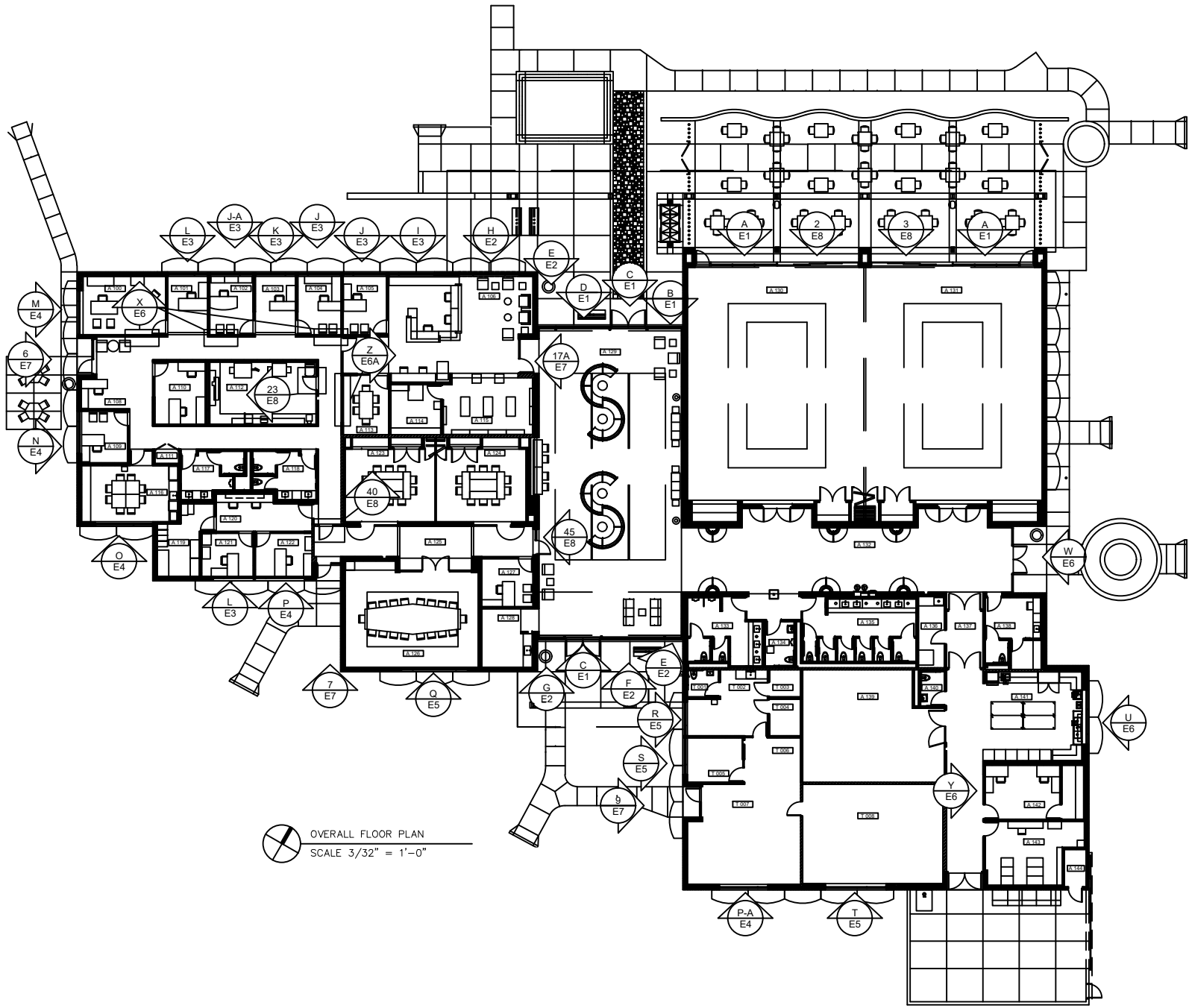
PROJECT INFORMATION	
<b>SEVRAR AVION CENTER</b>	PROJECT ADDRESS
	1733 E NORTHRUP BLVD. CHANDLER, AZ 85286

DRAWN BY	C. HAMLIN/C. GLEGHORN
CHECKED BY	C. GLEGHORN
SCALE	<b>NONE</b>
DATE	<b>9/8/2017</b>
SHEET	<b>C1</b>

This document and the disclosure herein are provided with the understanding and agreement that the recipient will not reproduce, sell or manufacture using the document, or the information contained herein without prior written permission of ARIZONA GLASS SPECIALISTS and that all rights to the document and the enclosed and confidential property of ARIZONA GLASS SPECIALISTS.

ARIZONA GLASS SPECIALISTS will not be responsible for any such errors, omissions and/or work that occur from the use of these drawings by other trades.

REVISIONS	
▲	PER ARCH COMMENTS
▲	PER ARCH COMMENTS



PROJECT TEAM INFORMATION	
GENERAL CONTRACTOR	HAYDON BUILDING CORPORATION
ARCHITECT	DOUGLAS ARCHITECTURE AND PLANNING
OWNER	SOUTH EAST VALLEY REGIONAL ASSOC. OF REALTORS

PROJECT INFORMATION	
SEVRAR AVION CENTER	PROJECT ADDRESS
1733 E NORTHUP BLVD. CHANDLER, AZ 85286	

DRAWN BY	C. HAMBLIN/C. GLEGHORN
CHECKED BY	C. GLEGHORN
SCALE	<b>2-1/2" = 1'-0"</b>
DATE	<b>9/8/2017</b>
SHEET	<b>F1</b>

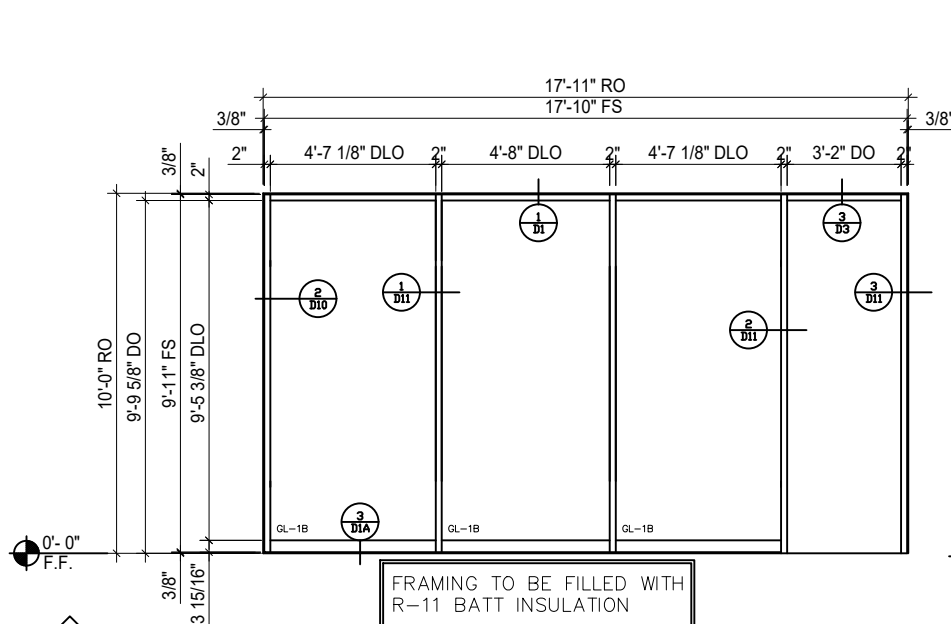
This document and the disclosure herein are provided with the understanding and agreement that the recipient will not reproduce same or manufacture using the document, or the information contained herein without prior written permission of ARIZONA GLASS SPECIALISTS and that all rights in the document and the exclusive and confidential property of ARIZONA GLASS SPECIALISTS.

REVISIONS	
▲	PER ARCH COMMENTS
▲	PER ARCH COMMENTS

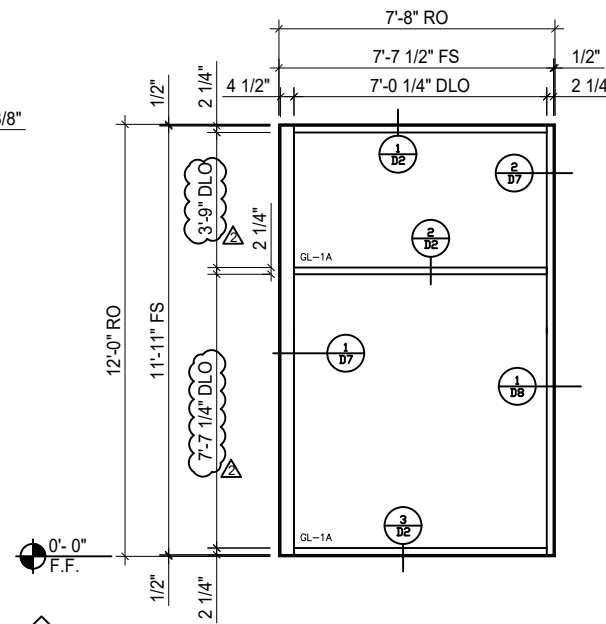
PROJECT TEAM INFORMATION	
GENERAL CONTRACTOR	HAYDON BUILDING CORPORATION
ARCHITECT	DOUGLAS ARCHITECTURE AND PLANNING
OWNER	SOUTH EAST VALLEY REGIONAL ASSOC. OF REALTORS

PROJECT INFORMATION	
SEVRAR AVION CENTER	PROJECT ADDRESS
1733 E NORTHRUP BLVD. CHANDLER, AZ 85286	

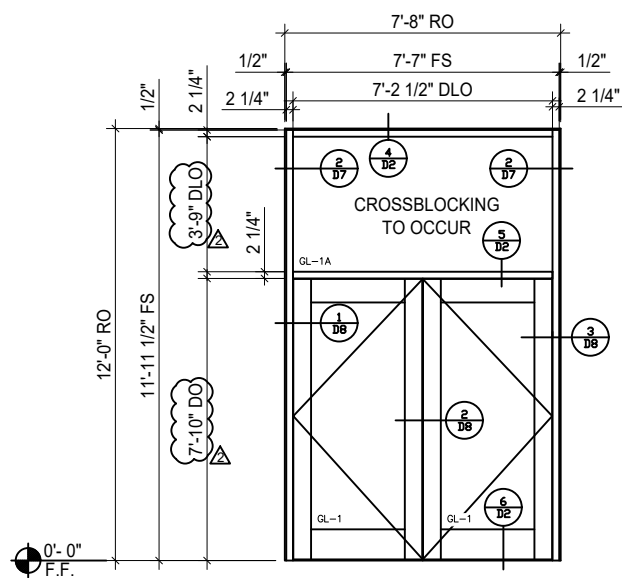
DRAWN BY	C. HAMBLIN/C. GLEGHORN
CHECKED BY	C. GLEGHORN
SCALE	<b>3/16" = 1'-0"</b>
DATE	<b>9/8/2017</b>
SHEET	<b>E1</b>



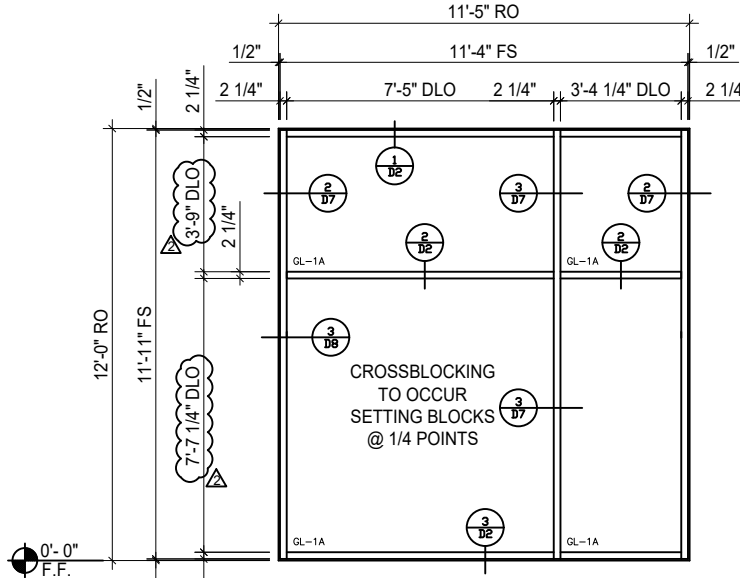
**A** ELEVATION A STOREFRONT (1 THUS, 1 OPP)  
 SCALE  $\frac{3}{16}'' = 1'-0''$   
 SYSTEM: ARCADIA ASL451 SERIES 2" X 4-1/2" SF SYSTEM  
 MATERIAL: ALUMINUM  
 FINISH: CLASS 2 CLEAR ANODIZED



**B** ELEVATION B CURTAINWALL (1 THUS)  
 SCALE  $\frac{3}{16}'' = 1'-0''$   
 SYSTEM: ARCADIA OPG6000 SERIES 2-1/4" X 6" CW SYSTEM  
 MATERIAL: ALUMINUM  
 FINISH: CLASS 2 CLEAR ANODIZED



**C** ELEVATION C CURTAINWALL (2 THUS)  
 SCALE  $\frac{3}{16}'' = 1'-0''$   
 SYSTEM: ARCADIA OPG6000 SERIES 2-1/4" X 6" CW SYSTEM  
 MATERIAL: ALUMINUM  
 FINISH: CLASS 2 CLEAR ANODIZED



**D** ELEVATION D CURTAINWALL (1 THUS)  
 SCALE  $\frac{3}{16}'' = 1'-0''$   
 SYSTEM: ARCADIA OPG6000 SERIES 2-1/4" X 6" CW SYSTEM  
 MATERIAL: ALUMINUM  
 FINISH: CLASS 2 CLEAR ANODIZED



This document and the disclosure herein are provided with the understanding and agreement that the recipient will not reproduce or manufacture using the document, or the information contained herein without prior written permission of ARIZONA GLASS SPECIALISTS and that all rights to the document and the exclusive and confidential property of ARIZONA GLASS SPECIALISTS.

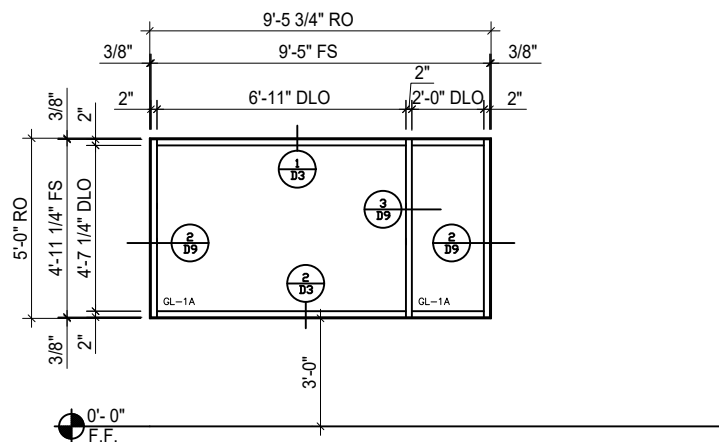
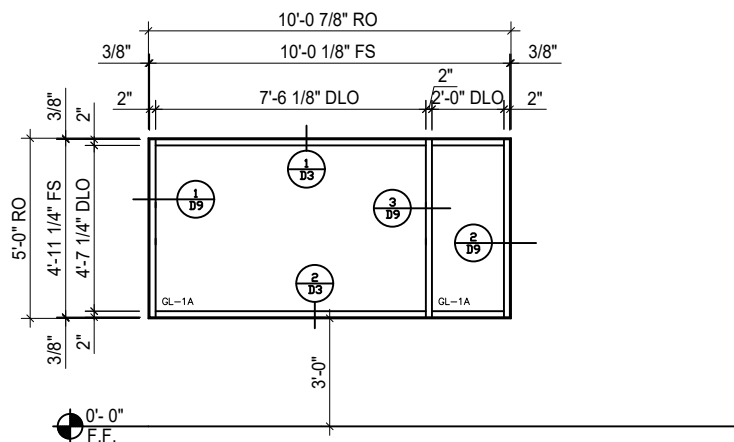
ARIZONA GLASS SPECIALISTS will not be responsible for any such errors, omissions and/or work that occurs from the use of these drawings to other trades.

REVISIONS	
▲	PER ARCH COMMENTS
▲	PER ARCH COMMENTS

PROJECT TEAM INFORMATION	
GENERAL CONTRACTOR	HAYDON BUILDING CORPORATION
ARCHITECT	DOUGLAS ARCHITECTURE AND PLANNING
OWNER	SOUTH EAST VALLEY REGIONAL ASSOC. OF REALTORS

PROJECT INFORMATION	
SEVRAR AVION CENTER	PROJECT ADDRESS
1733 E NORTHRUP BLVD. CHANDLER, AZ 85286	

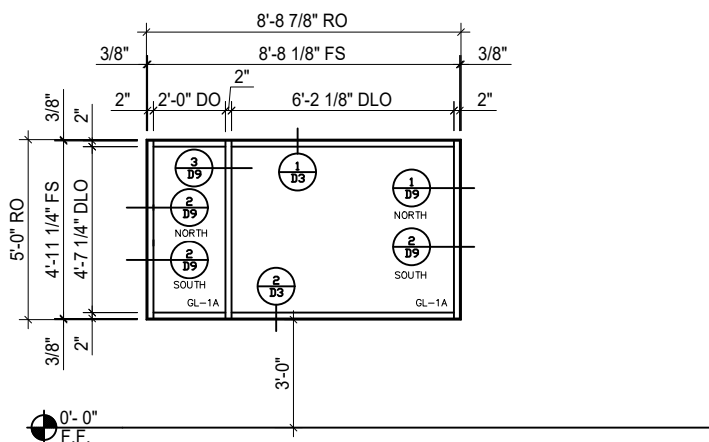
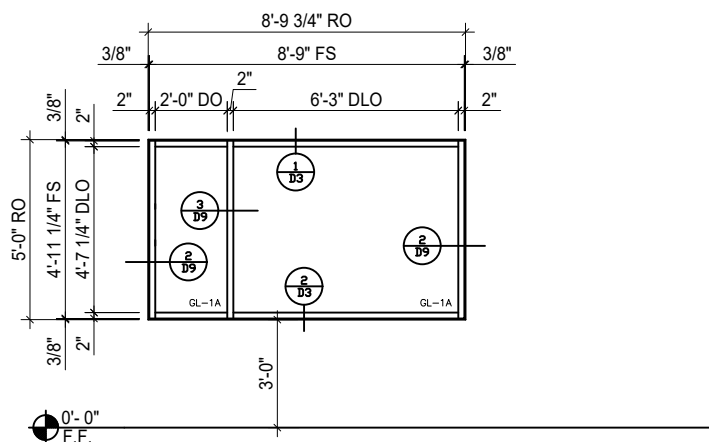
DRAWN BY	C. HAMBLIN/C. GLEGHORN
CHECKED BY	C. GLEGHORN
SCALE	<b>3/16" = 1'-0"</b>
DATE	<b>9/8/2017</b>
SHEET	<b>E3</b>



**I** ELEVATION I STOREFRONT (1 THUS)  
 SCALE  $\frac{3}{16}'' = 1'-0''$   
 SYSTEM: ARCADIA ASL451 SERIES 2" X 4-1/2" SF SYSTEM  
 MATERIAL: ALUMINUM  
 FINISH: CLASS 2 CLEAR ANODIZED

**J** ELEVATION J STOREFRONT (2 THUS)  
 SCALE  $\frac{3}{16}'' = 1'-0''$   
 SYSTEM: ARCADIA ASL451 SERIES 2" X 4-1/2" SF SYSTEM  
 MATERIAL: ALUMINUM  
 FINISH: CLASS 2 CLEAR ANODIZED

FRAMING TO BE FILLED WITH R-11 BATT INSULATION



**K** ELEVATION K STOREFRONT (1 THUS)  
 SCALE  $\frac{3}{16}'' = 1'-0''$   
 SYSTEM: ARCADIA ASL451 SERIES 2" X 4-1/2" SF SYSTEM  
 MATERIAL: ALUMINUM  
 FINISH: CLASS 2 CLEAR ANODIZED

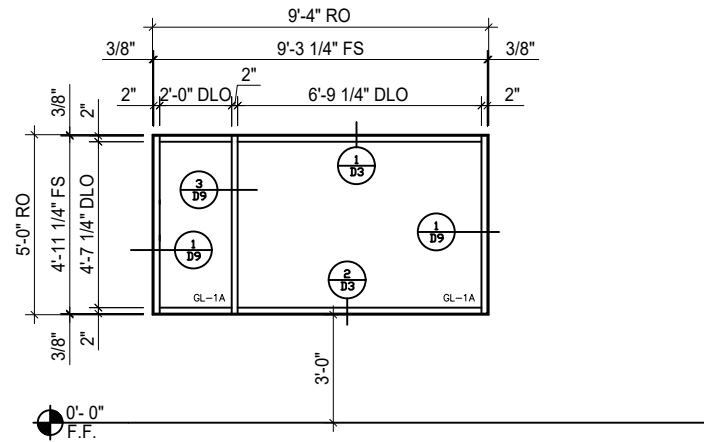
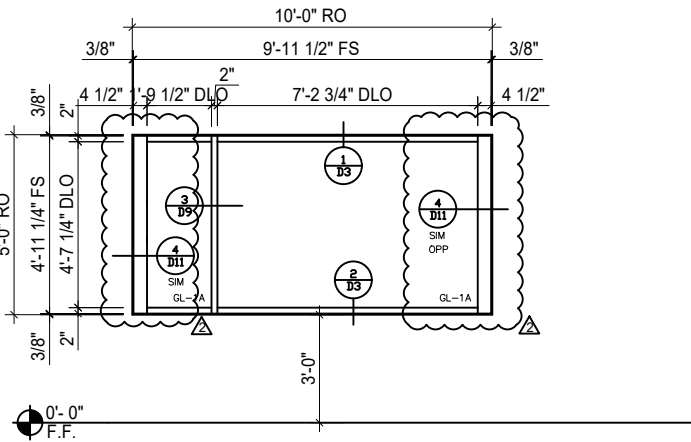
**L** ELEVATION L STOREFRONT (2 THUS)  
 SCALE  $\frac{3}{16}'' = 1'-0''$   
 SYSTEM: ARCADIA ASL451 SERIES 2" X 4-1/2" SF SYSTEM  
 MATERIAL: ALUMINUM  
 FINISH: CLASS 2 CLEAR ANODIZED

This document and the disclosure herein are provided with the understanding and agreement that the recipient will not reproduce same or manufacture using the document, or the information contained herein without the prior written permission of ARIZONA GLASS SPECIALISTS and that all rights in the document and the exclusive and confidential property of ARIZONA GLASS SPECIALISTS.

ARIZONA GLASS SPECIALISTS will not be responsible for any such errors, omissions and/or work that occurs from the use of these drawings by other firms.

**REVISIONS**

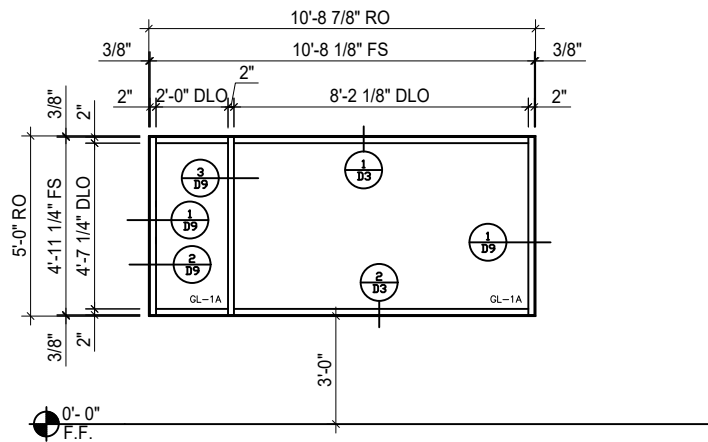
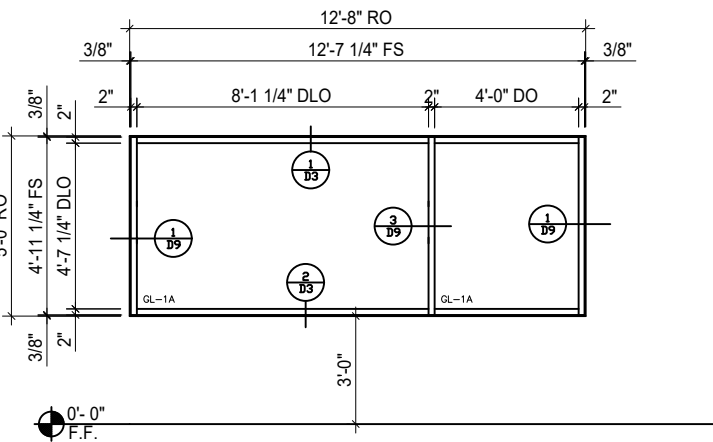
▲	PER ARCH COMMENTS
▲	PER ARCH COMMENTS



FRAMING TO BE FILLED WITH R-11 BATT INSULATION

**M** ELEVATION M STOREFRONT (1 THUS)  
 SCALE  $\frac{3}{16}'' = 1'-0''$   
 SYSTEM: ARCADIA ASL451 SERIES 2" X 4-1/2" SF SYSTEM  
 MATERIAL: ALUMINUM  
 FINISH: CLASS 2 CLEAR ANODIZED

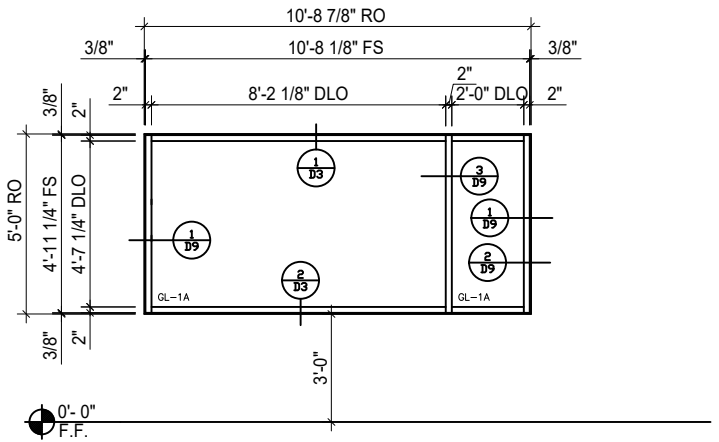
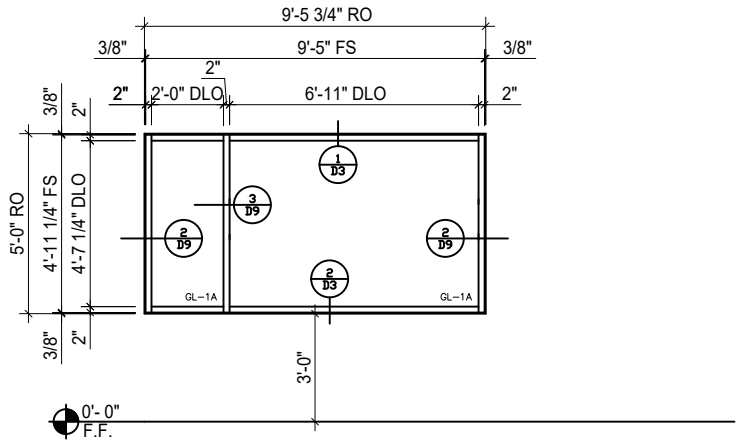
**N** ELEVATION N STOREFRONT (2 THUS)  
 SCALE  $\frac{3}{16}'' = 1'-0''$   
 SYSTEM: ARCADIA ASL451 SERIES 2" X 4-1/2" SF SYSTEM  
 MATERIAL: ALUMINUM  
 FINISH: CLASS 2 CLEAR ANODIZED



**O** ELEVATION O STOREFRONT (1 THUS)  
 SCALE  $\frac{3}{16}'' = 1'-0''$   
 SYSTEM: ARCADIA ASL451 SERIES 2" X 4-1/2" SF SYSTEM  
 MATERIAL: ALUMINUM  
 FINISH: CLASS 2 CLEAR ANODIZED

**P** ELEVATION P STOREFRONT (1 THUS)  
 SCALE  $\frac{3}{16}'' = 1'-0''$   
 SYSTEM: ARCADIA ASL451 SERIES 2" X 4-1/2" SF SYSTEM  
 MATERIAL: ALUMINUM  
 FINISH: CLASS 2 CLEAR ANODIZED

<b>PROJECT TEAM INFORMATION</b>	GENERAL CONTRACTOR	HAYDON BUILDING CORPORATION
	ARCHITECT	DOUGLAS ARCHITECTURE AND PLANNING
	OWNER	SOUTH EAST VALLEY REGIONAL ASSOC. OF REALTORS
<b>PROJECT INFORMATION</b>	<b>SEVRAR AVION CENTER</b>	
	PROJECT ADDRESS	1733 E NORTHRUP BLVD. CHANDLER, AZ 85286
	DRAWN BY	C. HAMBLIN/C. GLEGHORN
	CHECKED BY	C. GLEGHORN
	SCALE	<b><math>\frac{3}{16}'' = 1'-0''</math></b>
	DATE	<b>9/8/2017</b>
	SHEET	<b>E4</b>



**J-A** ELEVATION J-A STOREFRONT (1 THUS)  
 SCALE  $\frac{3}{16}'' = 1'-0''$   
 SYSTEM: ARCADIA ASL451 SERIES 2" X 4-1/2" SF SYSTEM  
 MATERIAL: ALUMINUM  
 FINISH: CLASS 2 CLEAR ANODIZED

**P-A** ELEVATION P-A STOREFRONT (1 THUS)  
 SCALE  $\frac{3}{16}'' = 1'-0''$   
 SYSTEM: ARCADIA ASL451 SERIES 2" X 4-1/2" SF SYSTEM  
 MATERIAL: ALUMINUM  
 FINISH: CLASS 2 CLEAR ANODIZED



www.arizonaglassspecialists.com  
 3164 COUNTRY CLUB DR. SUITE #5  
 MESA, AZ 85210

This document and the disclosure herein are provided with the understanding and agreement that the recipient will not reproduce same or manufacture using the document, or the information contained herein without the prior written permission of ARIZONA GLASS SPECIALISTS and that all rights to the document and the exclusive and confidential property of ARIZONA GLASS SPECIALISTS.

REVISIONS	
▲	PER ARCH COMMENTS
▲	PER ARCH COMMENTS

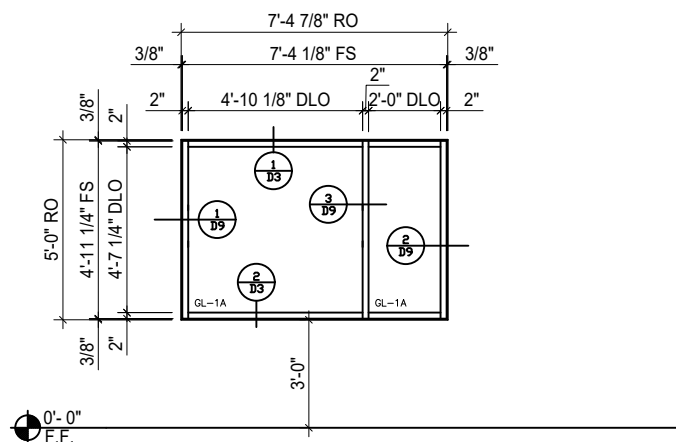
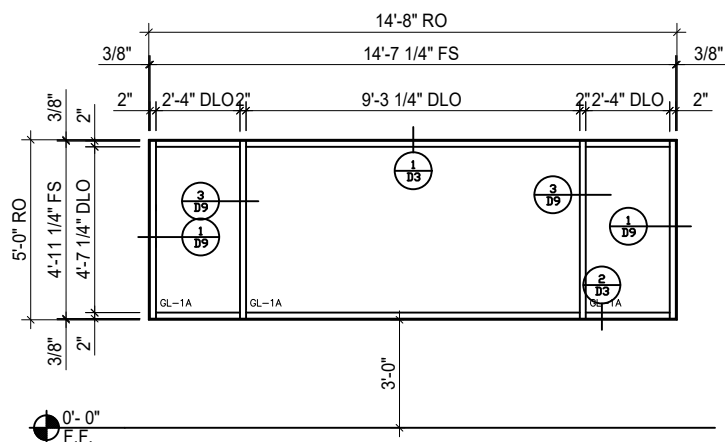
PROJECT TEAM INFORMATION
GENERAL CONTRACTOR HAYDON BUILDING CORPORATION
ARCHITECT DOUGLAS ARCHITECTURE AND PLANNING
OWNER SOUTH EAST VALLEY REGIONAL ASSOC. OF REALTORS

PROJECT INFORMATION
<b>SEVRAR AVION CENTER</b>
PROJECT ADDRESS 1733 E NORTHRUP BLVD. CHANDLER, AZ 85286

DRAWN BY C. HAMBLIN/C. GLEGHORN
CHECKED BY C. GLEGHORN
SCALE <b>3/16" = 1'-0"</b>
DATE <b>9/8/2017</b>
SHEET <b>E4A</b>

This document and the disclosure herein are provided with the understanding and agreement that the recipient will not reproduce or manufacture using the document, or the information contained herein without the prior written permission of ARIZONA GLASS SPECIALISTS and that all rights to the document and the exclusive and confidential property of ARIZONA GLASS SPECIALISTS.

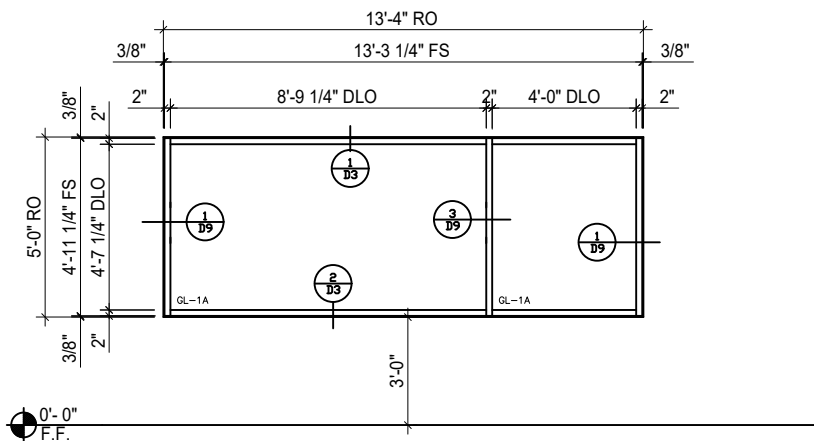
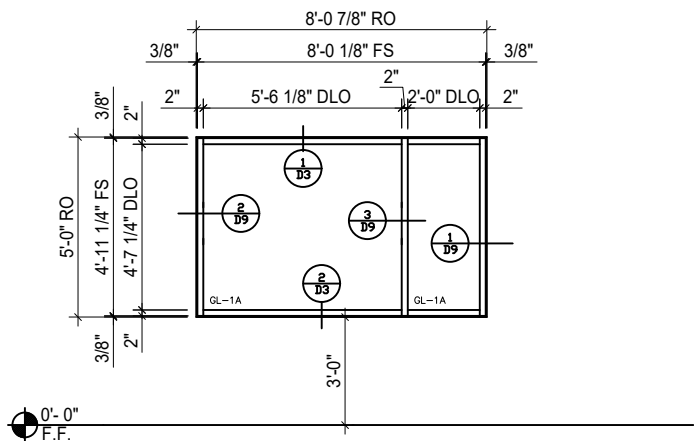
REVISIONS	
▲	PER ARCH COMMENTS
▲	PER ARCH COMMENTS



**Q** ELEVATION Q STOREFRONT (1 THUS)  
 SCALE  $\frac{3}{16}'' = 1'-0''$   
 SYSTEM: ARCADIA ASL451 SERIES 2" X 4-1/2" SF SYSTEM  
 MATERIAL: ALUMINUM  
 FINISH: CLASS 2 CLEAR ANODIZED

**R** ELEVATION R STOREFRONT (1 THUS)  
 SCALE  $\frac{3}{16}'' = 1'-0''$   
 SYSTEM: ARCADIA ASL451 SERIES 2" X 4-1/2" SF SYSTEM  
 MATERIAL: ALUMINUM  
 FINISH: CLASS 2 CLEAR ANODIZED

FRAMING TO BE FILLED WITH  
 R-11 BATT INSULATION



**S** ELEVATION S STOREFRONT (1 THUS)  
 SCALE  $\frac{3}{16}'' = 1'-0''$   
 SYSTEM: ARCADIA ASL451 SERIES 2" X 4-1/2" SF SYSTEM  
 MATERIAL: ALUMINUM  
 FINISH: CLASS 2 CLEAR ANODIZED

**T** ELEVATION T STOREFRONT (1 THUS)  
 SCALE  $\frac{3}{16}'' = 1'-0''$   
 SYSTEM: ARCADIA ASL451 SERIES 2" X 4-1/2" SF SYSTEM  
 MATERIAL: ALUMINUM  
 FINISH: CLASS 2 CLEAR ANODIZED

PROJECT TEAM INFORMATION	
GENERAL CONTRACTOR	HAYDON BUILDING CORPORATION
ARCHITECT	DOUGLAS ARCHITECTURE AND PLANNING
OWNER	SOUTH EAST VALLEY REGIONAL ASSOC. OF REALTORS

PROJECT INFORMATION	
SEVRAR AVION CENTER	PROJECT ADDRESS
1733 E NORTHRUP BLVD. CHANDLER, AZ 85286	

DRAWN BY	C. HAMBLIN/C. GLEGHORN
CHECKED BY	C. GLEGHORN
SCALE	<b><math>\frac{3}{16}'' = 1'-0''</math></b>
DATE	<b>9/8/2017</b>
SHEET	<b>E5</b>



This document and the disclosure herein are provided with the understanding and agreement that the recipient will not reproduce, disseminate or manufacture using the document, or the information contained herein without the prior written permission of ARIZONA GLASS SPECIALISTS and that all rights to the document and the exclusive and confidential property of ARIZONA GLASS SPECIALISTS.

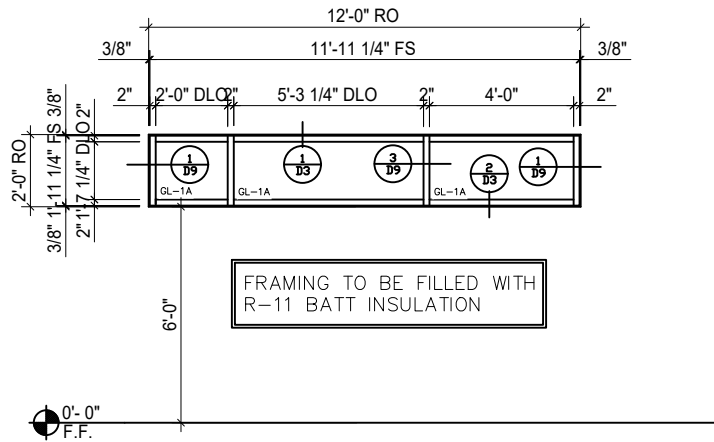
ARIZONA GLASS SPECIALISTS will not be responsible for any such errors, omissions and/or work that occurs from the use of these drawings by any trades.

REVISIONS	
▲	PER ARCH COMMENTS
▲	PER ARCH COMMENTS

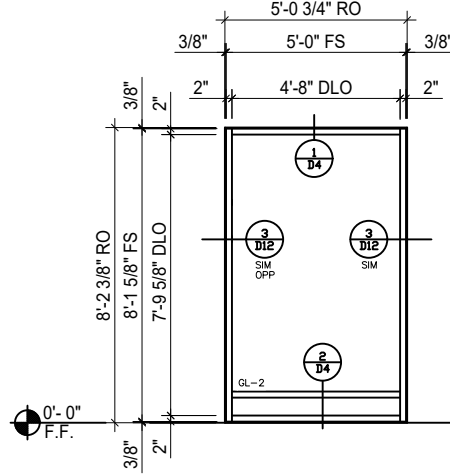
PROJECT TEAM INFORMATION	
GENERAL CONTRACTOR	HAYDON BUILDING CORPORATION
ARCHITECT	DOUGLAS ARCHITECTURE AND PLANNING
OWNER	SOUTH EAST VALLEY REGIONAL ASSOC. OF REALTORS

PROJECT INFORMATION	
<b>SEVRAR AVION CENTER</b>	<b>PROJECT ADDRESS</b>
	1733 E NORTHRUP BLVD. CHANDLER, AZ 85286

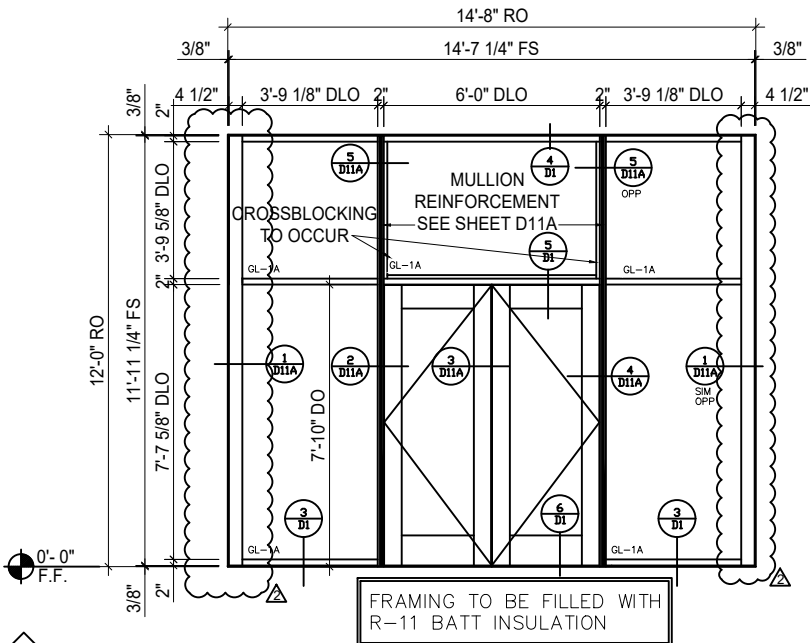
DRAWN BY	C. HAMBLIN/C. GLEGHORN
CHECKED BY	C. GLEGHORN
SCALE	<b>3/16"=1'-0"</b>
DATE	<b>9/8/2017</b>
SHEET	<b>E6</b>



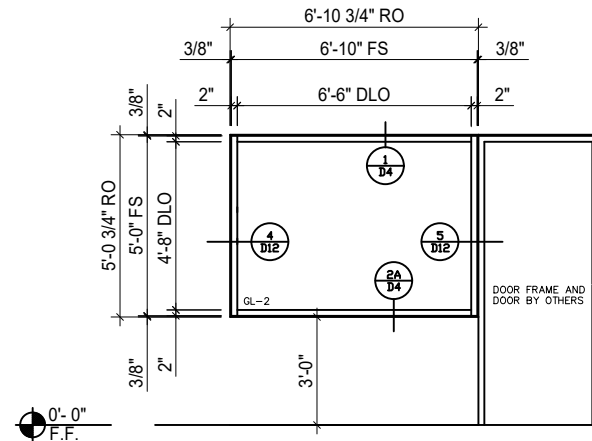
**U** ELEVATION U STOREFRONT (1 THUS)  
 SCALE  $\frac{3}{16}'' = 1'-0''$   
 SYSTEM: ARCADIA ASL451 SERIES 2" X 4-1/2" SF SYSTEM  
 MATERIAL: ALUMINUM  
 FINISH: CLASS 2 CLEAR ANODIZED



**X** ELEVATION X STOREFRONT (3 THUS)  
 SCALE  $\frac{3}{16}'' = 1'-0''$   
 SYSTEM: ARCADIA AR450+ SERIES 2" X 4-1/2" SF SYSTEM  
 MATERIAL: ALUMINUM  
 FINISH: CLASS 2 CLEAR ANODIZED



**W** ELEVATION W STOREFRONT (1 THUS)  
 SCALE  $\frac{3}{16}'' = 1'-0''$   
 SYSTEM: ARCADIA ASL451 SERIES 2" X 4-1/2" SF SYSTEM  
 MATERIAL: ALUMINUM  
 FINISH: CLASS 2 CLEAR ANODIZED



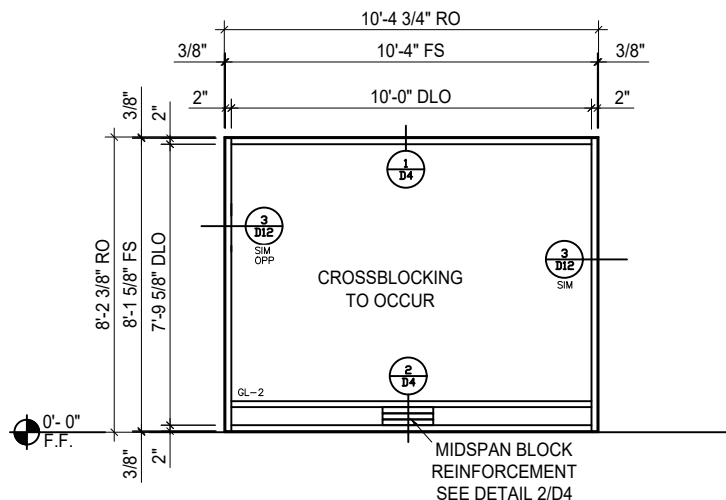
**Y** ELEVATION Y STOREFRONT (1 THUS)  
 SCALE  $\frac{3}{16}'' = 1'-0''$   
 SYSTEM: ARCADIA AR450+ SERIES 2" X 4-1/2" SF SYSTEM  
 MATERIAL: ALUMINUM  
 FINISH: CLASS 2 CLEAR ANODIZED

This document and the disclosure herein are provided with the understanding and agreement that the recipient will not reproduce same or manufacture using the document, or the information contained herein without the prior written permission of ARIZONA GLASS SPECIALISTS and that all rights to the document and the exclusive and confidential property of ARIZONA GLASS SPECIALISTS.

ARIZONA GLASS SPECIALISTS will not be responsible for any such errors omissions and/or work that occurs from the use of these drawings by other parties.

**REVISIONS**

▲	PER ARCH COMMENTS
▲	PER ARCH COMMENTS



**Z**

ELEVATION Z STOREFRONT (1 THUS)

SCALE  $\frac{3}{16}'' = 1'-0''$

SYSTEM: ARCADIA AR450+ SERIES 2" X 4-1/2" SF SYSTEM  
 MATERIAL: ALUMINUM  
 FINISH: CLASS 2 CLEAR ANODIZED

**PROJECT TEAM INFORMATION**

**GENERAL CONTRACTOR**  
 HAYDON BUILDING CORPORATION

**ARCHITECT**  
 DOUGLAS ARCHITECTURE AND PLANNING

**OWNER**  
 SOUTH EAST VALLEY REGIONAL ASSOC. OF REALTORS

**PROJECT INFORMATION**

**SEVRAR AVION CENTER**  
**PROJECT ADDRESS**  
 1733 E NORTHRUP BLVD.  
 CHANDLER, AZ 85286

**DRAWN BY**  
 C. HAMBLIN/C. GLEGHORN

**CHECKED BY**  
 C. GLEGHORN

**SCALE**  
 $\frac{3}{16}'' = 1'-0''$

**DATE**  
 9/8/2017

**SHEET**  
**E6A**

This document and the disclosure herein are provided with the understanding and agreement that the recipient will not reproduce or manufacture using the document, or the information contained herein without the prior written permission of ARIZONA GLASS SPECIALISTS and that all rights to the document and the exclusive and confidential property of ARIZONA GLASS SPECIALISTS.

ARIZONA GLASS SPECIALISTS will not be responsible for any such errors omissions and/or work that occurs from the use of these drawings by other trades.

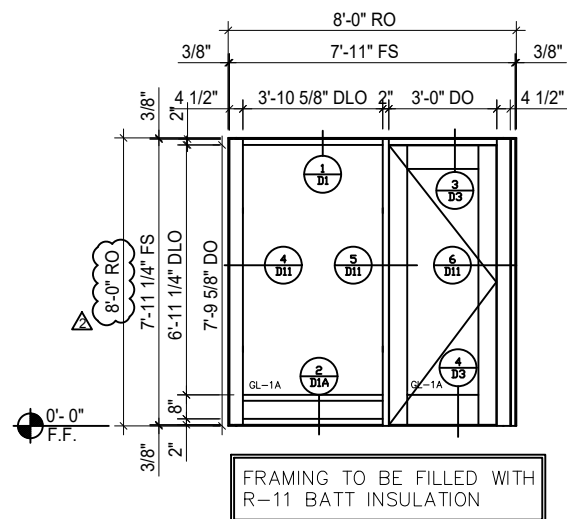
**REVISIONS**

▲	PER ARCH COMMENTS
▲	PER ARCH COMMENTS

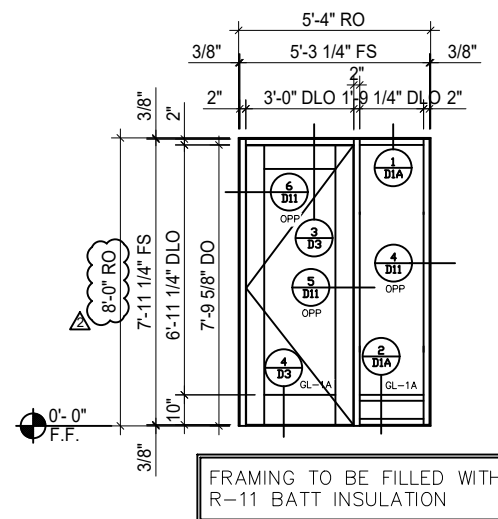
<b>PROJECT TEAM INFORMATION</b>	<b>GENERAL CONTRACTOR</b>
	HAYDON BUILDING CORPORATION
	<b>ARCHITECT</b>
	DOUGLAS ARCHITECTURE AND PLANNING
<b>OWNER</b>	SOUTH EAST VALLEY REGIONAL ASSOC. OF REALTORS

<b>PROJECT INFORMATION</b>	<b>SEVRAR AVION CENTER</b>
	<b>PROJECT ADDRESS</b> 1733 E NORTHRUP BLVD. CHANDLER, AZ 85286

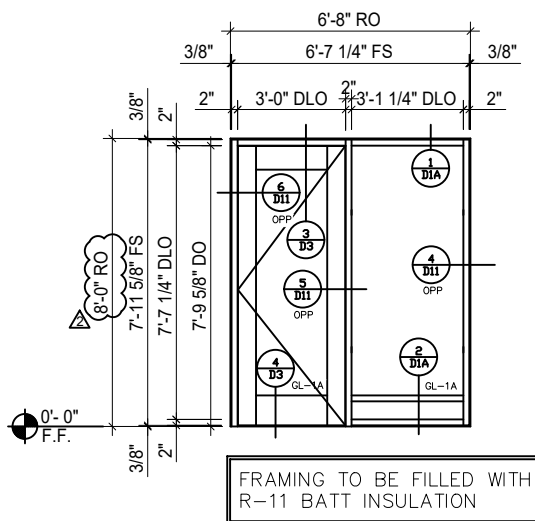
<b>DRAWN BY</b>	C. HAMBLIN/C. GLEGHORN
<b>CHECKED BY</b>	C. GLEGHORN
<b>SCALE</b>	<b>3/16"=1'-0"</b>
<b>DATE</b>	<b>9/8/2017</b>
<b>SHEET</b>	<b>E7</b>



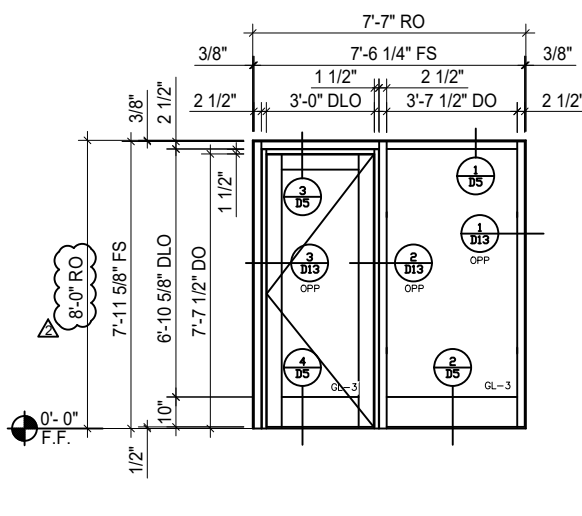
**6** ELEVATION 6 STOREFRONT (1 THUS)  
 SCALE  $\frac{3}{16}'' = 1'-0''$   
 SYSTEM: ARCADIA ASL451 SERIES 2" X 4-1/2" SF SYSTEM  
 MATERIAL: ALUMINUM  
 FINISH: CLASS 2 CLEAR ANODIZED



**7** ELEVATION 7 STOREFRONT (1 THUS)  
 SCALE  $\frac{3}{16}'' = 1'-0''$   
 SYSTEM: ARCADIA ASL451 SERIES 2" X 4-1/2" SF SYSTEM  
 MATERIAL: ALUMINUM  
 FINISH: CLASS 2 CLEAR ANODIZED

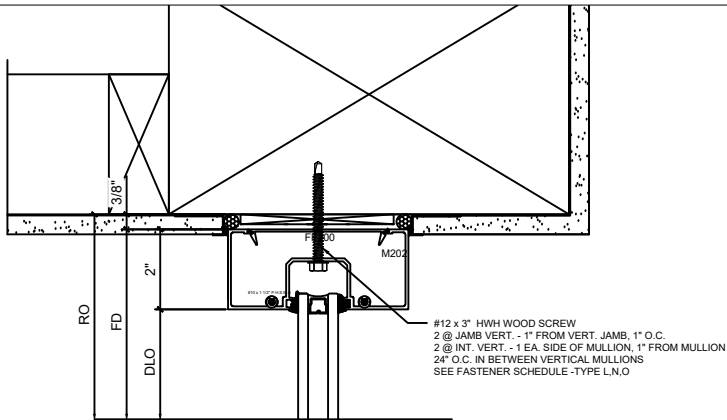


**9** ELEVATION 9 STOREFRONT (1 THUS)  
 SCALE  $\frac{3}{16}'' = 1'-0''$   
 SYSTEM: ARCADIA ASL451 SERIES 2" X 4-1/2" SF SYSTEM  
 MATERIAL: ALUMINUM  
 FINISH: CLASS 2 CLEAR ANODIZED

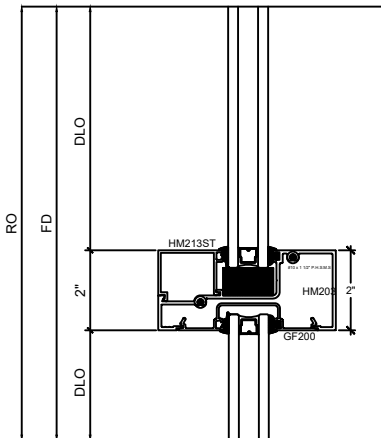


**17A** ELEVATION 17A STOREFRONT (1 THUS)  
 SCALE  $\frac{3}{16}'' = 1'-0''$   
 SYSTEM: SAFTI-FIRST GPX 250 SERIES 45 MIN. FIRE-RATED FRAMING SYSTEM  
 SAFTI-FIRST GPX 500 SERIES 45 MIN. FIRE-RATED DOOR  
 MATERIAL: ALUMINUM  
 FINISH: CLASS 2 CLEAR ANODIZED

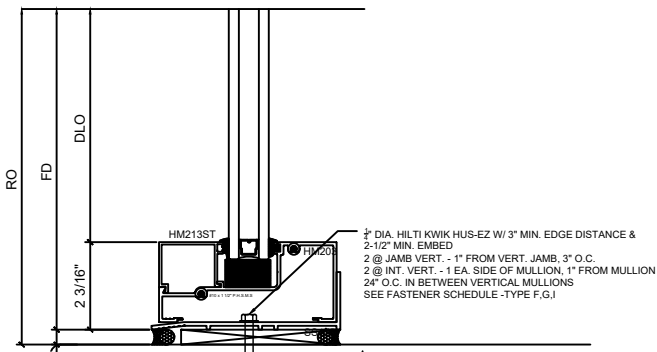




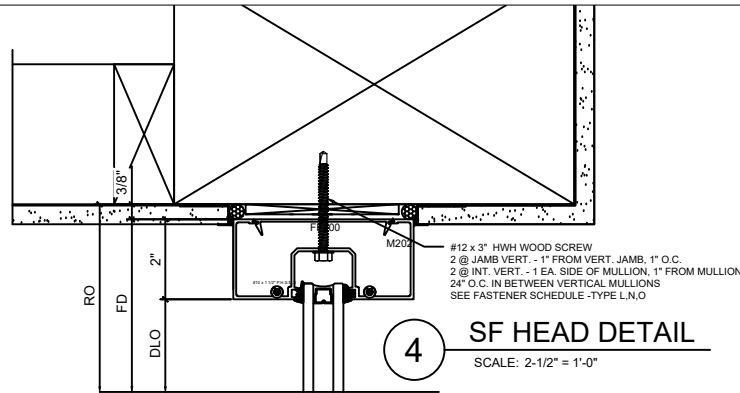
**1 SF HEAD DETAIL**  
SCALE: 2-1/2" = 1'-0"



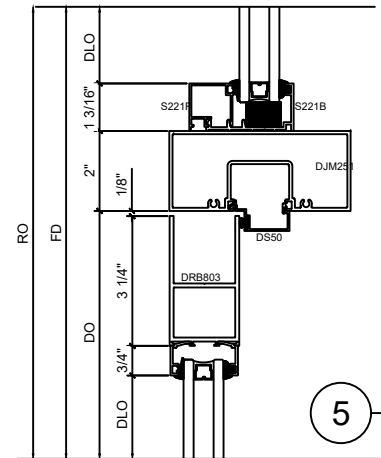
**2 SF INT. HORIZ. DETAIL**  
SCALE: 2-1/2" = 1'-0"



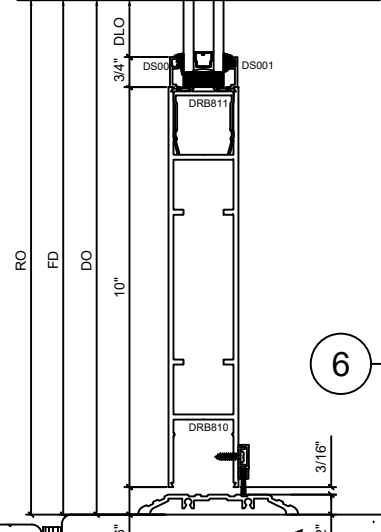
**3 SF SILL DETAIL**  
SCALE: 2-1/2" = 1'-0"



**4 SF HEAD DETAIL**  
SCALE: 2-1/2" = 1'-0"



**5 SF DOOR HEAD DETAIL**  
SCALE: 2-1/2" = 1'-0"



**6 SF DOOR SILL DETAIL**  
SCALE: 2-1/2" = 1'-0"

This document and the details herein are provided with the understanding and agreement that the recipient will not reproduce same or manufacture using the document, or the information contained herein without prior written permission of ARIZONA GLASS SPECIALISTS and that all rights to the document and the exclusive and confidential property of ARIZONA GLASS SPECIALISTS.

ARIZONA GLASS SPECIALISTS will not be responsible for any such errors omissions and/or work that occurs from the use of these drawings by other trades.

REVISIONS	
▲	PER ARCH COMMENTS
▲	PER ARCH COMMENTS

PROJECT TEAM INFORMATION	
GENERAL CONTRACTOR	HAYDON BUILDING CORPORATION
ARCHITECT	DOUGLAS ARCHITECTURE AND PLANNING
OWNER	SOUTH EAST VALLEY REGIONAL ASSOC. OF REALTORS

PROJECT INFORMATION	
SEVRAR AVION CENTER	PROJECT ADDRESS
1733 E NORTHRUP BLVD. CHANDLER, AZ 85286	

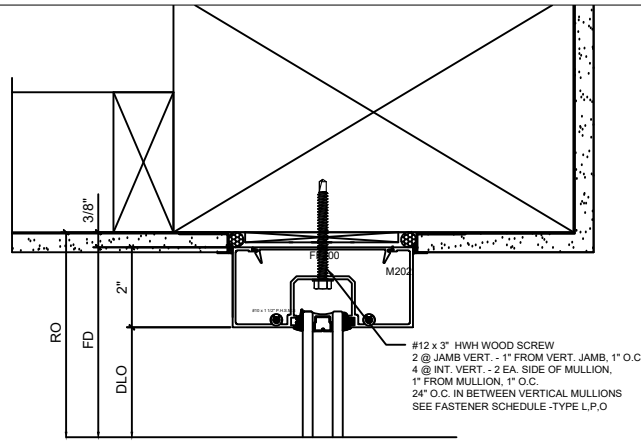
DRAWN BY	C. HAMBLIN/C. GLEGHORN
CHECKED BY	C. GLEGHORN
SCALE	<b>2-1/2" = 1'-0"</b>
DATE	<b>9/8/2017</b>
SHEET	<b>D1</b>

This document and the disclosure herein are provided with the understanding and agreement that the recipient will not reproduce same or manufacture using the document, or the information contained herein without prior written permission of ARIZONA GLASS SPECIALISTS and that all rights to the document and the exclusive and confidential property of ARIZONA GLASS SPECIALISTS.

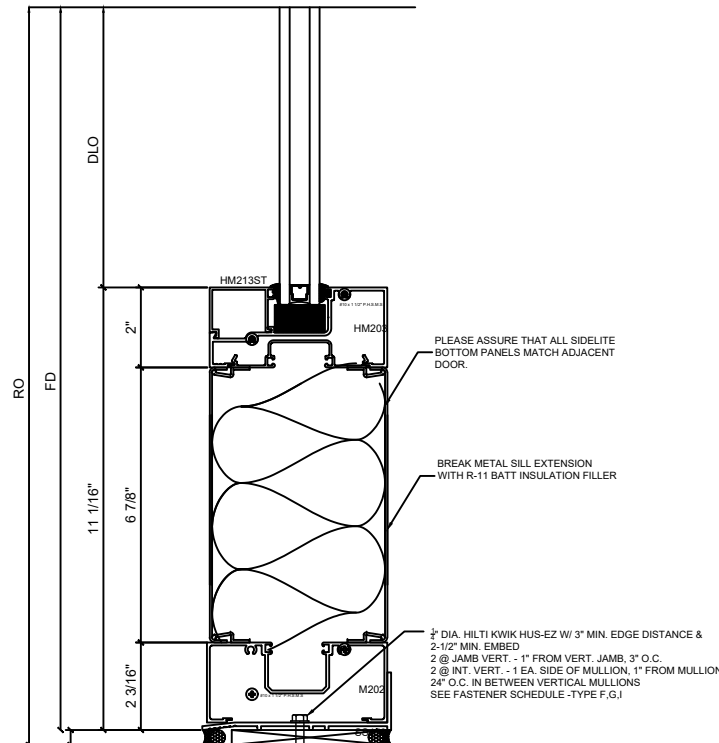
ARIZONA GLASS SPECIALISTS will not be responsible for any such errors omissions and/or work that accrue from the use of these drawings by other trades.

**REVISIONS**

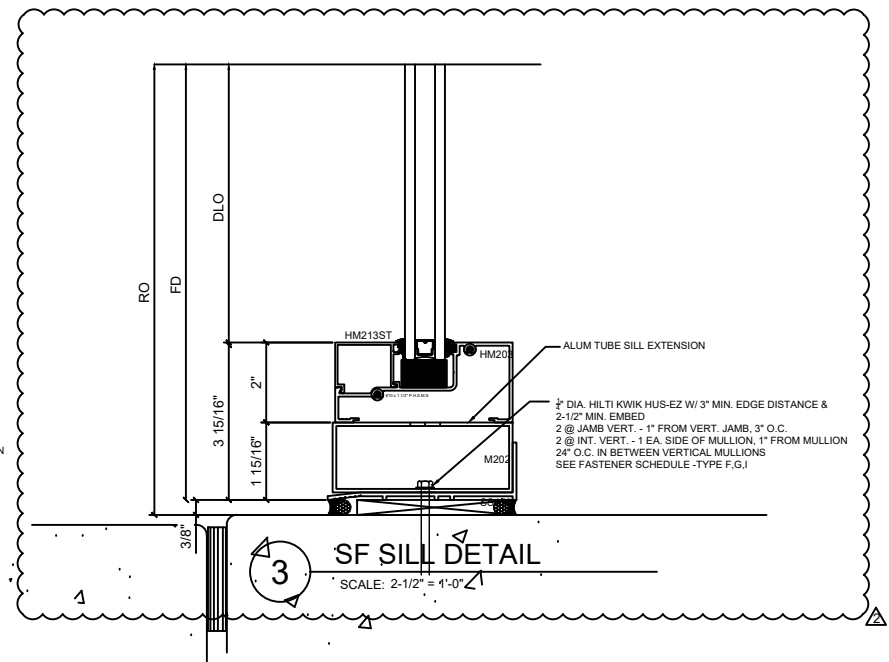
▲	PER ARCH COMMENTS
▲	PER ARCH COMMENTS



**1 SF HEAD DETAIL**  
 SCALE: 2-1/2" = 1'-0"



**2 SF SILL DETAIL**  
 SCALE: 2-1/2" = 1'-0"



**3 SF SILL DETAIL**  
 SCALE: 2-1/2" = 1'-0"

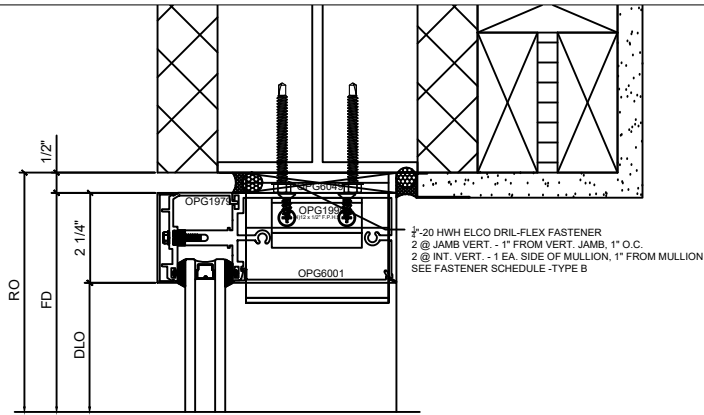
<b>PROJECT INFORMATION</b>	<b>GENERAL CONTRACTOR</b> HAYDON BUILDING CORPORATION
	<b>ARCHITECT</b> DOUGLAS ARCHITECTURE AND PLANNING
<b>OWNER</b> SOUTH EAST VALLEY REGIONAL ASSOC. OF REALTORS	
<b>PROJECT INFORMATION</b>	<b>SEVRAR AVION CENTER</b>
	<b>PROJECT ADDRESS</b> 1733 E NORTHRUP BLVD. CHANDLER, AZ 85286
<b>DRAWN BY</b> C. HAMBLIN/C. GLEGHORN	
<b>CHECKED BY</b> C. GLEGHORN	
<b>SCALE</b> 2-1/2" = 1'-0"	
<b>DATE</b> 9/8/2017	
<b>SHEET</b> <b>D1A</b>	

This document and the drawings herein are provided with the understanding and agreement that the recipient will not reproduce same or manufacture using the drawings, or the information contained herein without prior written permission of ARIZONA GLASS SPECIALISTS and that all rights to the document and the exclusive and confidential property of ARIZONA GLASS SPECIALISTS.

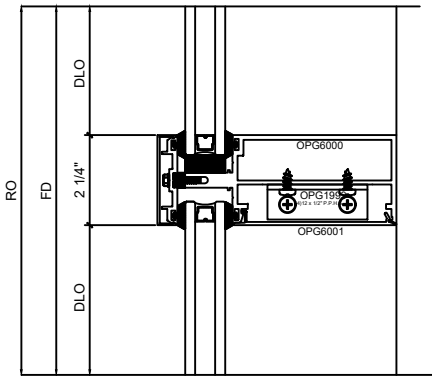
ARIZONA GLASS SPECIALISTS will not be responsible for any such errors omissions and/or work that occurs from the use of these drawings by other trades.

**REVISIONS**

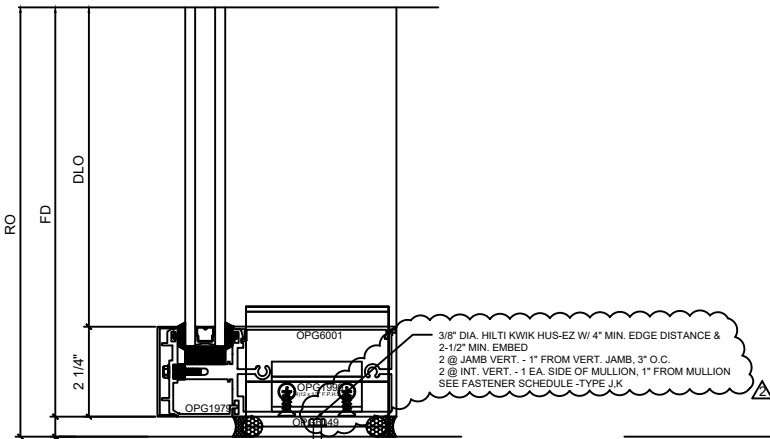
▲	PER ARCH COMMENTS
▲	PER ARCH COMMENTS



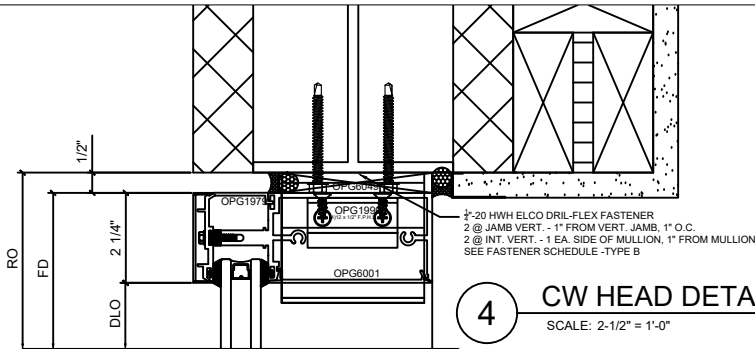
**1 CW HEAD DETAIL**  
 SCALE: 2-1/2" = 1'-0"



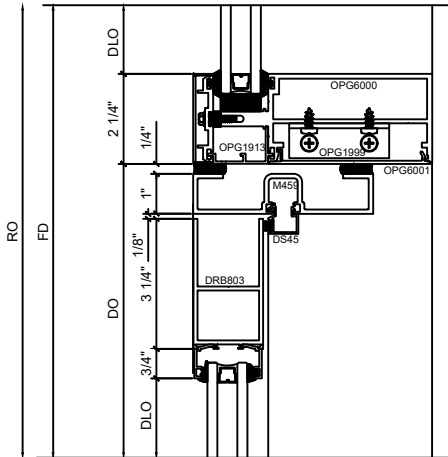
**2 CW INT. HORIZ. DETAIL**  
 SCALE: 2-1/2" = 1'-0"



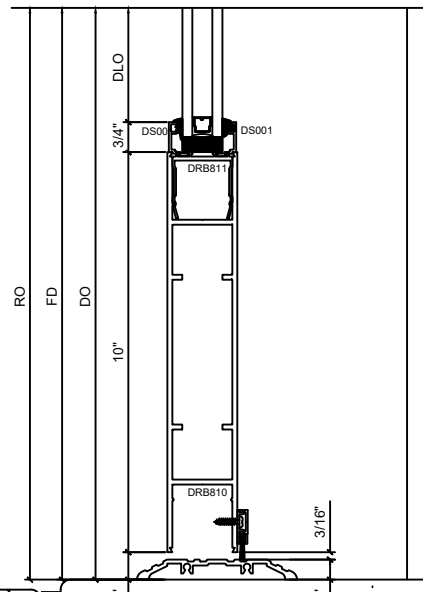
**3 CW SILL DETAIL**  
 SCALE: 2-1/2" = 1'-0"



**4 CW HEAD DETAIL**  
 SCALE: 2-1/2" = 1'-0"



**5 CW DOOR HEAD DETAIL**  
 SCALE: 2-1/2" = 1'-0"



**6 CW DOOR SILL DETAIL**  
 SCALE: 2-1/2" = 1'-0"

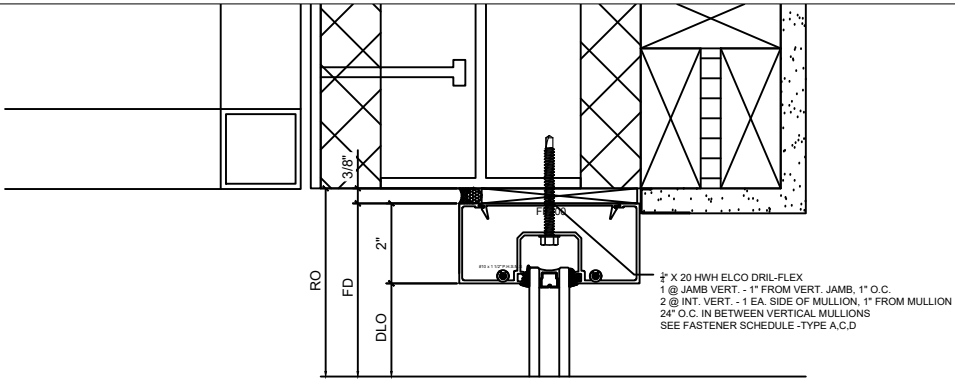
**PROJECT TEAM INFORMATION**

<b>GENERAL CONTRACTOR</b>	HAYDON BUILDING CORPORATION
<b>ARCHITECT</b>	DOUGLAS ARCHITECTURE AND PLANNING
<b>OWNER</b>	SOUTH EAST VALLEY REGIONAL ASSOC. OF REALTORS

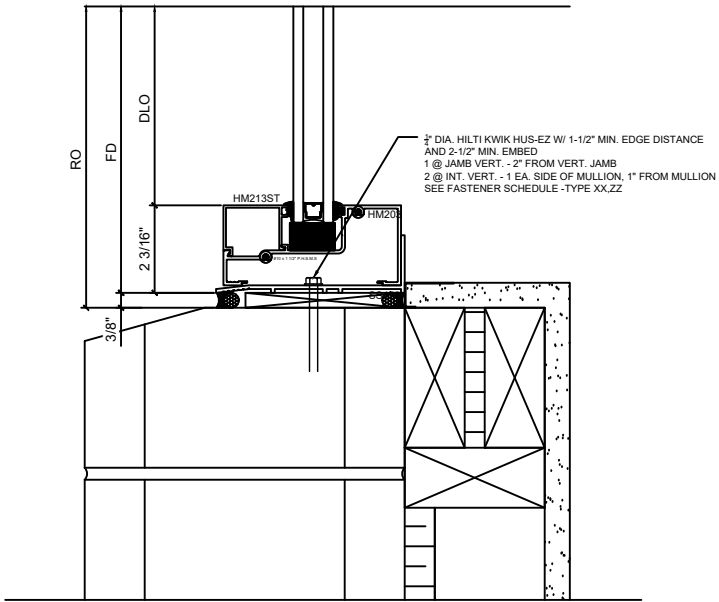
**PROJECT INFORMATION**

<b>SEVRAR AVION CENTER</b>
<b>PROJECT ADDRESS</b>
1733 E NORTHRUP BLVD. CHANDLER, AZ 85286

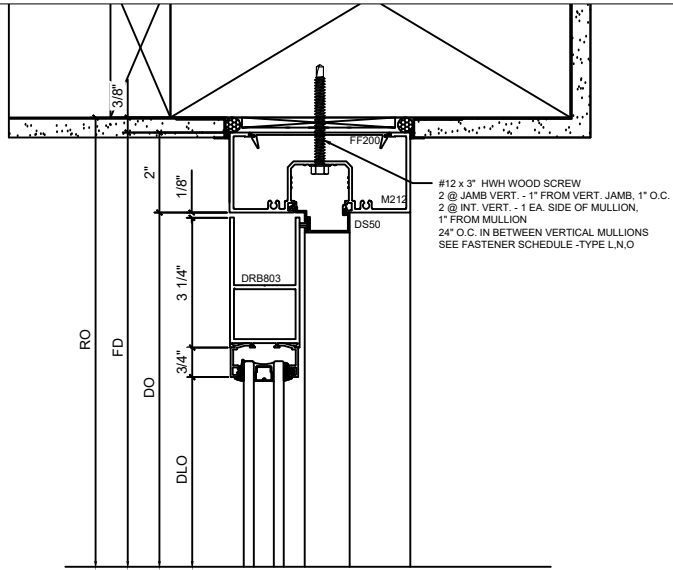
<b>DRAWN BY</b>	C. HAMBLIN/C. GLEGHORN
<b>CHECKED BY</b>	C. GLEGHORN
<b>SCALE</b>	2-1/2" = 1'-0"
<b>DATE</b>	9/8/2017
<b>SHEET</b>	<b>D2</b>



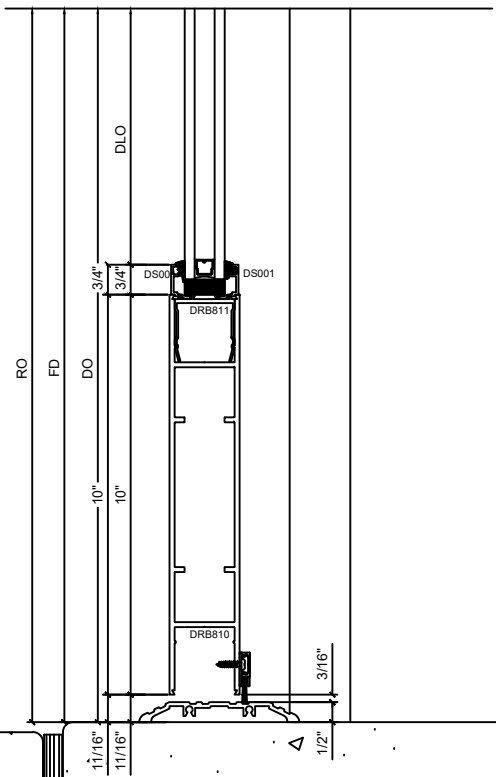
**1 SF HEAD DETAIL**  
SCALE: 2-1/2" = 1'-0"



**2 SF SILL DETAIL**  
SCALE: 2-1/2" = 1'-0"



**3 SF DOOR HEAD DETAIL**  
SCALE: 2-1/2" = 1'-0"



**4 SF DOOR SILL DETAIL**  
SCALE: 2-1/2" = 1'-0"



www.arizonaglassspecialists.com  
3164 COUNTRY CLUB DR. SUITE #5  
MESA, AZ 85210

This document and the drawings herein are provided with the understanding and agreement that the recipient will not reproduce same or manufacture using the document, or the information contained herein without prior written permission of ARIZONA GLASS SPECIALISTS and that all rights to the document and the exclusive and confidential property of ARIZONA GLASS SPECIALISTS.  
ARIZONA GLASS SPECIALISTS will not be responsible for any such errors omissions and/or work that occurs from the use of these drawings by other trades.

REVISIONS	
▲	PER ARCH COMMENTS
▲	PER ARCH COMMENTS

PROJECT TEAM INFORMATION	
GENERAL CONTRACTOR	HAYDON BUILDING CORPORATION
ARCHITECT	DOUGLAS ARCHITECTURE AND PLANNING
OWNER	SOUTH EAST VALLEY REGIONAL ASSOC. OF REALTORS

PROJECT INFORMATION	
<b>SEVRAR AVION CENTER</b>	
PROJECT ADDRESS	1733 E NORTHRUP BLVD. CHANDLER, AZ 85286

DRAWN BY	C. HAMLIN/C. GLEGHORN
CHECKED BY	C. GLEGHORN
SCALE	<b>2-1/2" = 1'-0"</b>
DATE	<b>9/8/2017</b>
SHEET	<b>D3</b>

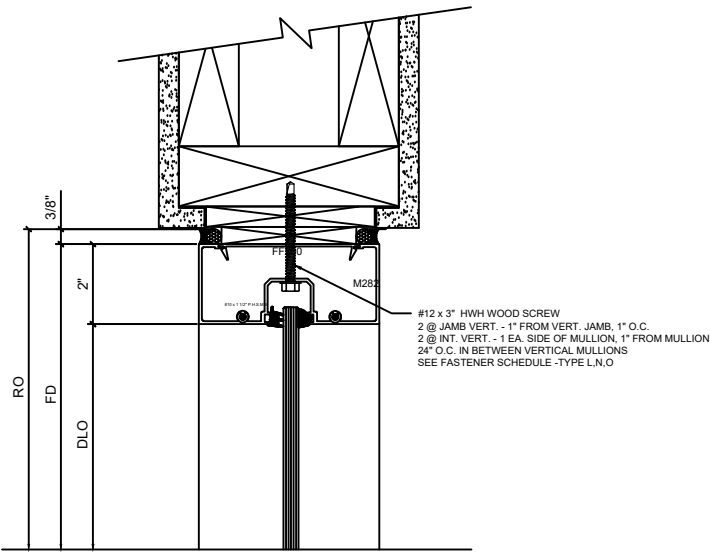


The document and the disclosure herein are provided with the understanding and agreement that the recipient will not reproduce same or manufacture using the document, or the information contained herein without prior written permission of ARIZONA GLASS SPECIALISTS and that all rights to the document and the exclusive and confidential property of ARIZONA GLASS SPECIALISTS.

ARIZONA GLASS SPECIALISTS will not be responsible for any such errors, omissions and/or work that accrue from the use of these drawings by other trades.

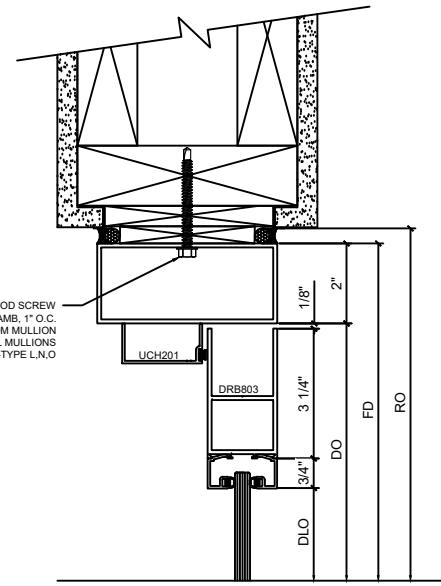
**REVISIONS**

▲	PER ARCH COMMENTS
▲	PER ARCH COMMENTS



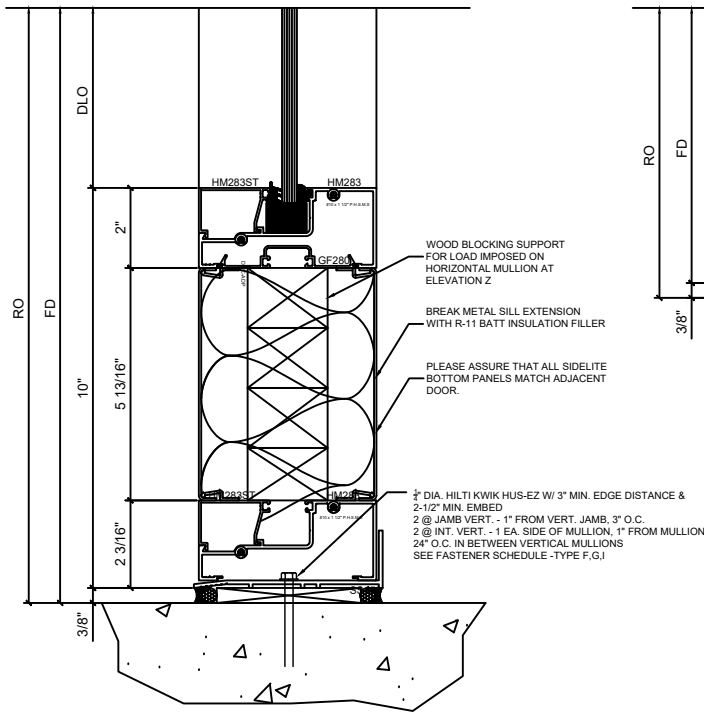
**1 SF INTERIOR HEAD DETAIL**

SCALE: 2-1/2" = 1'-0"



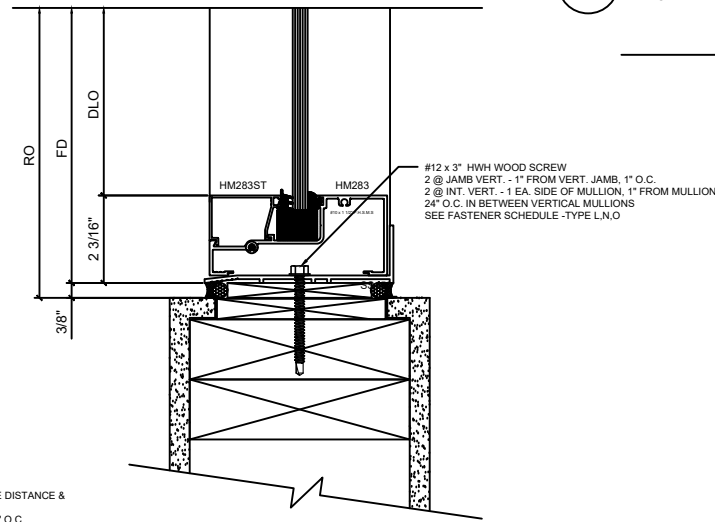
**3 SF INTERIOR DOOR HEAD DETAIL**

SCALE: 2-1/2" = 1'-0"



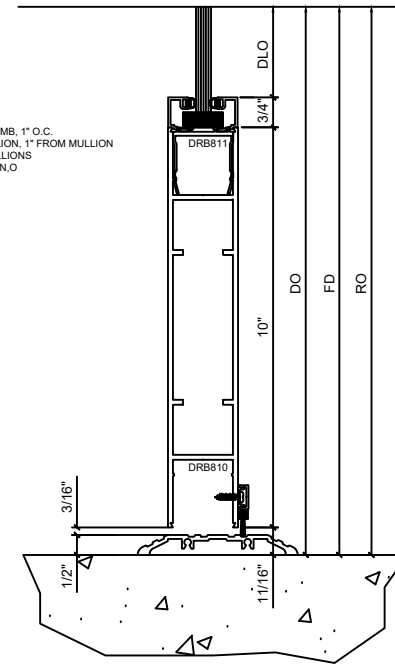
**2 SF INTERIOR SILL DETAIL**

SCALE: 2-1/2" = 1'-0"



**2A SF INTERIOR SILL DETAIL**

SCALE: 2-1/2" = 1'-0"



**4 SF INTERIOR DOOR SILL DETAIL**

SCALE: 2-1/2" = 1'-0"

**PROJECT TEAM INFORMATION**

GENERAL CONTRACTOR	HAYDON BUILDING CORPORATION
ARCHITECT	DOUGLAS ARCHITECTURE AND PLANNING
OWNER	SOUTH EAST VALLEY REGIONAL ASSOC. OF REALTORS

**PROJECT INFORMATION**

SEVRAR AVION CENTER
PROJECT ADDRESS
1733 E NORTHRUP BLVD.
CHANDLER, AZ 85286

DRAWN BY  
 C. HAMBLIN/C. GLEGHORN

CHECKED BY  
 C. GLEGHORN

SCALE  
**2-1/2" = 1'-0"**

DATE  
**9/8/2017**

SHEET  
**D4**

The document and the disclosure herein are provided with the understanding and agreement that the recipient will not reproduce same or manufacture using the document, or the information contained herein without prior written permission of ARIZONA GLASS SPECIALISTS and that all rights to the document and the exclusive and confidential property of ARIZONA GLASS SPECIALISTS.

ARIZONA GLASS SPECIALISTS will not be responsible for any such errors and/or work that accrues from the use of these drawings by other trades.

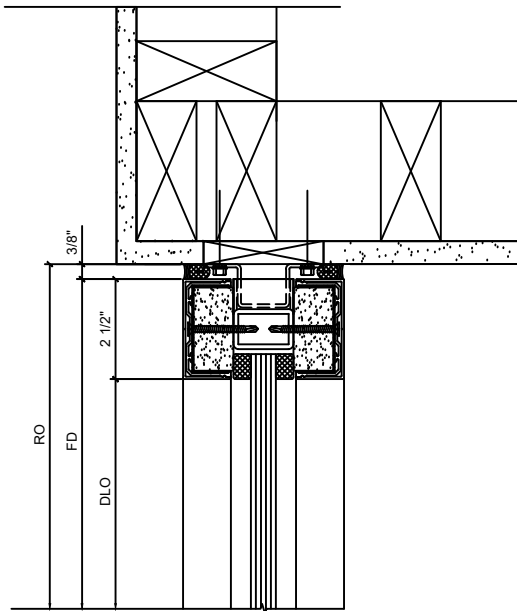
**REVISIONS**

▲	PER ARCH COMMENTS
▲	PER ARCH COMMENTS

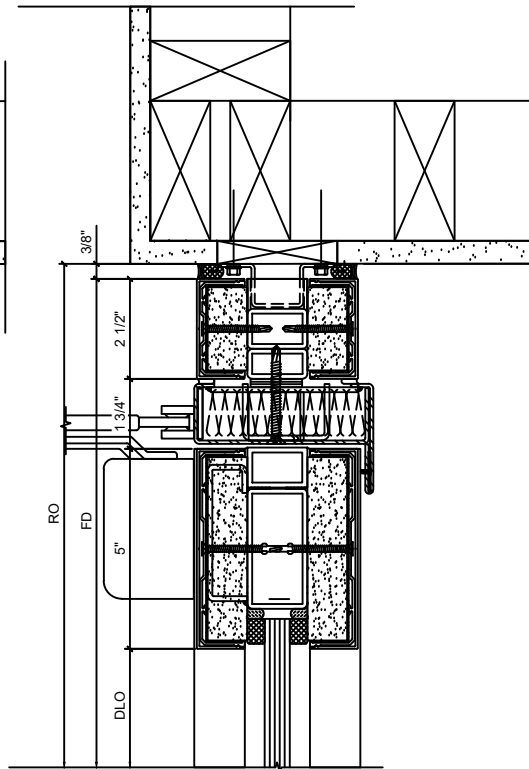
<b>PROJECT TEAM INFORMATION</b>	
GENERAL CONTRACTOR	HAYDON BUILDING CORPORATION
ARCHITECT	DOUGLAS ARCHITECTURE AND PLANNING
OWNER	SOUTH EAST VALLEY REGIONAL ASSOC. OF REALTORS

<b>PROJECT INFORMATION</b>	
<b>SEVRAR AVION CENTER</b>	
PROJECT ADDRESS	1733 E NORTHRUP BLVD. CHANDLER, AZ 85286

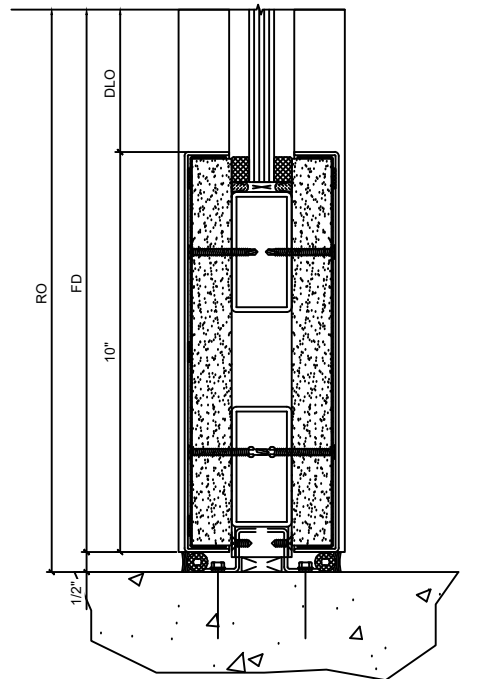
DRAWN BY	C. HAMBLIN/C. GLEGHORN
CHECKED BY	C. GLEGHORN
SCALE	<b>2-1/2" = 1'-0"</b>
DATE	<b>9/8/2017</b>
SHEET	<b>D5</b>



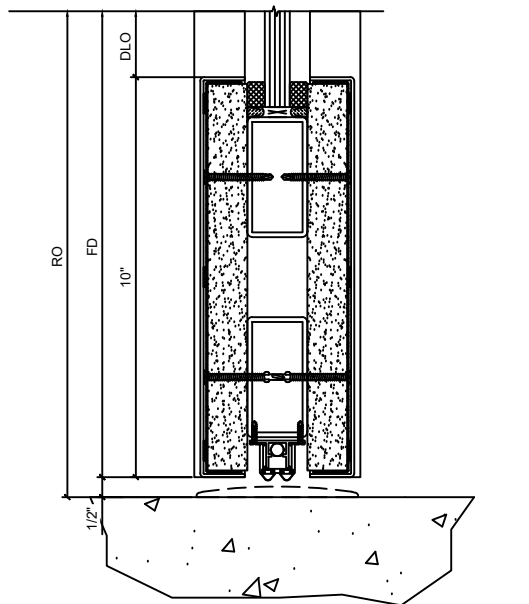
**1 F.R. FRAME HEAD DETAIL**  
 SCALE: 2-1/2" = 1'-0"



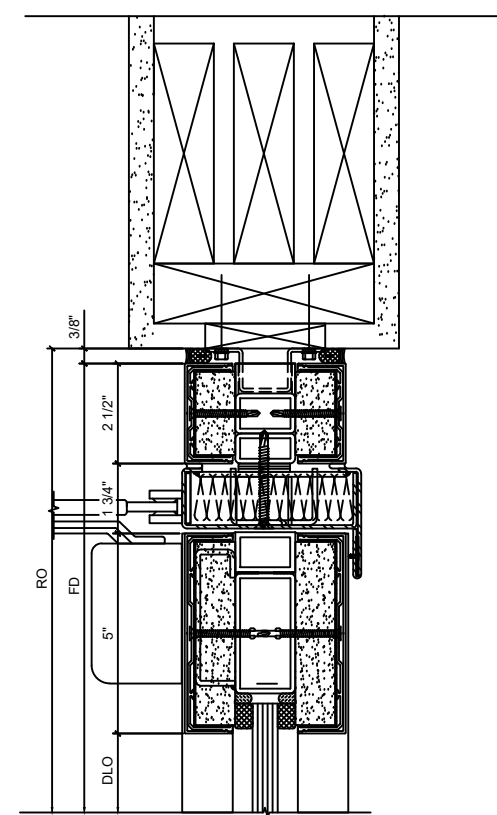
**3 F.R. FRAME DOOR HEAD DETAIL**  
 SCALE: 2-1/2" = 1'-0"



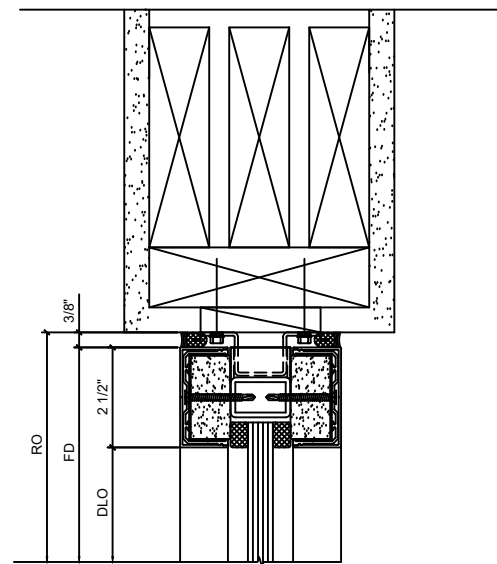
**2 F.R. FRAME SILL DETAIL**  
 SCALE: 2-1/2" = 1'-0"



**4 F.R. FRAME DOOR SILL DETAIL**  
 SCALE: 2-1/2" = 1'-0"



**5 F.R. FRAME DOOR HEAD DETAIL**  
 SCALE: 2-1/2" = 1'-0"



**6 F.R. FRAME HEAD DETAIL**  
 SCALE: 2-1/2" = 1'-0"

The document and the disclosure herein are provided with the understanding and agreement that the recipient will not reproduce same or manufacture using the document, or the information contained herein without prior written permission of ARIZONA GLASS SPECIALISTS and that all rights to the document and the exclusive and confidential property of ARIZONA GLASS SPECIALISTS.

ARIZONA GLASS SPECIALISTS will not be responsible for any such errors omissions and/or work that accrue from the use of these drawing by other trades.

**REVISIONS**

△	PER ARCH COMMENTS
△	PER ARCH COMMENTS

**PROJECT TEAM INFORMATION**

GENERAL CONTRACTOR  
 HAYDON BUILDING CORPORATION

ARCHITECT  
 DOUGLAS ARCHITECTURE AND PLANNING

OWNER  
 SOUTH EAST VALLEY REGIONAL ASSOC. OF REALTORS

**PROJECT INFORMATION**

**SEVRAR AVION CENTER**  
 PROJECT ADDRESS  
 1733 E NORTHRUP BLVD.  
 CHANDLER, AZ 85286

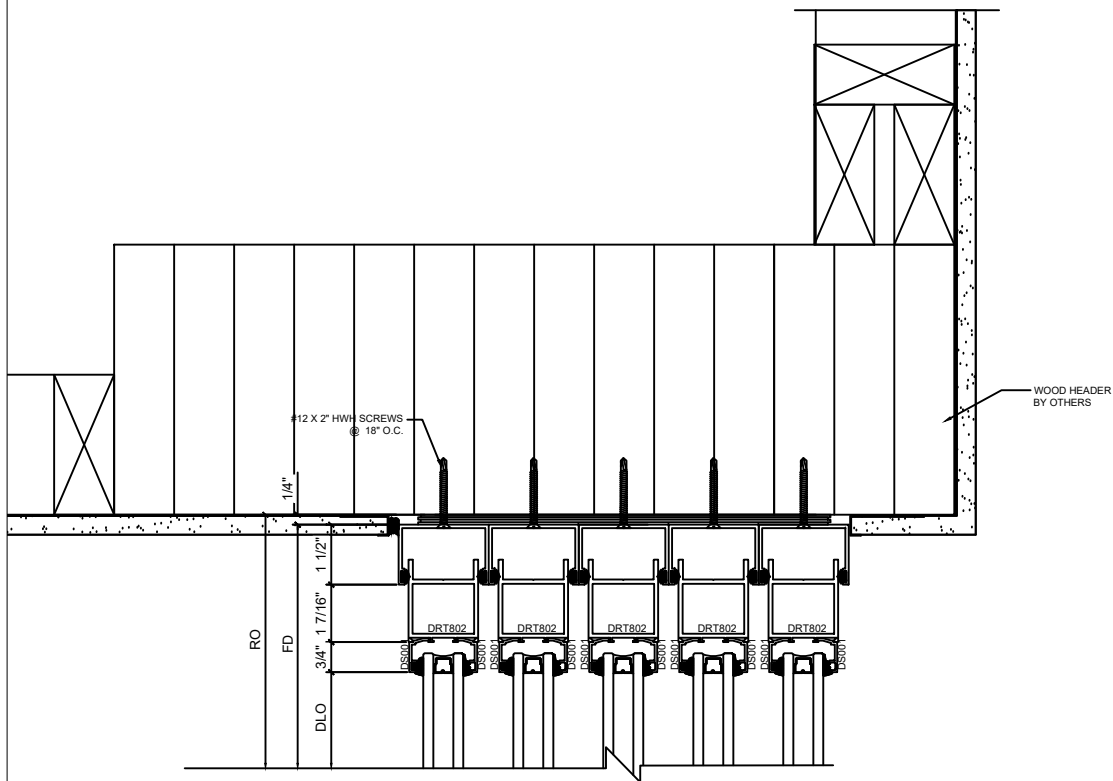
DRAWN BY  
 C. HAMBLIN/C. GLEGHORN

CHECKED BY  
 C. GLEGHORN

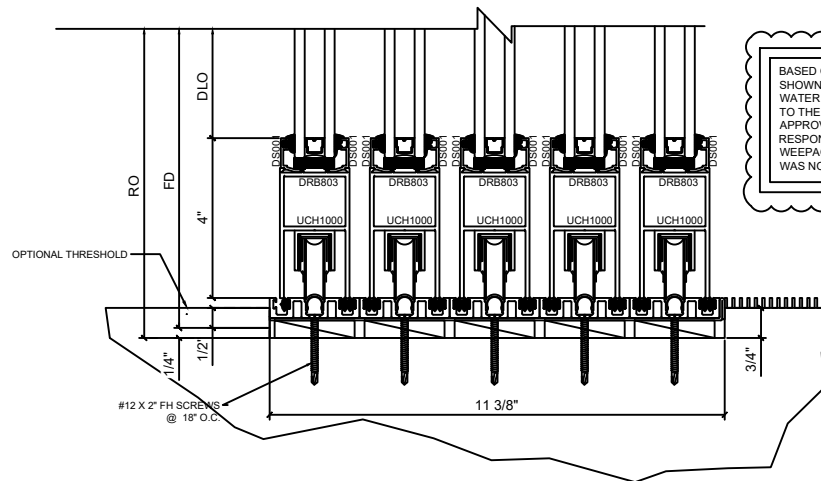
SCALE  
**2-1/2" = 1'-0"**

DATE  
**9/8/2017**

SHEET  
**D6**



**1 DOOR SLIDER HEAD DETAIL**  
 SCALE: 2-1/2" = 1'-0"



BASED ON THE DESIGN OF THE DOOR SLIDER SILL DETAIL SHOWN ON DETAIL 2A/D6, AGS HAS EXPRESSED OUR CONCERNS WITH WATER INTRUSION DUE TO THE LACK OF WATER WEEPAGE IN RELATION TO THE SILL TRACK BEING RECESSED IN THE CONCRETE SLAB. WITH APPROVAL OF THE SILL TRACK DESIGN, AGS CANNOT TAKE RESPONSIBILITY FOR WATER INTRUSION DUE TO THE LACK OF WEEPAGE AS AGS HAS OFFERED A DESIGN OPTION FOR WEEPAGE THAT WAS NOT APPROVED.

**2A DOOR SLIDER SILL DETAIL**  
 SCALE: 2-1/2" = 1'-0"

The document and the drawings herein are provided with the understanding and agreement that the recipient will not reproduce same or manufacture using the document, or the information contained herein without prior written permission of ARIZONA GLASS SPECIALISTS and that all rights to the document and the exclusive and confidential property of ARIZONA GLASS SPECIALISTS.

ARIZONA GLASS SPECIALISTS will not be responsible for any such errors, omissions and/or work that accrue from the use of these drawings by other trades.

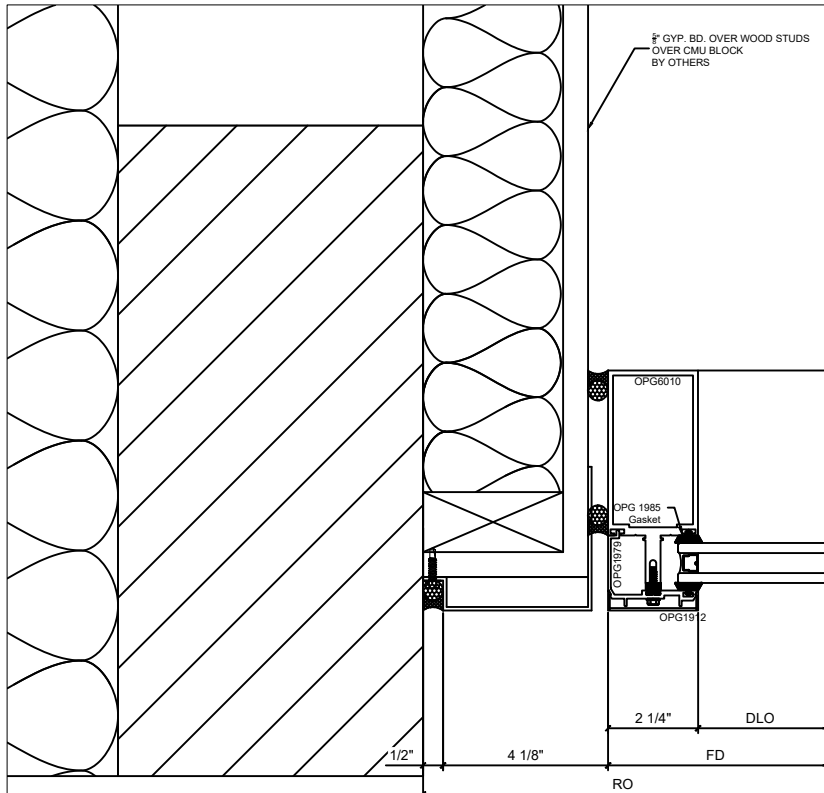
**REVISIONS**

▲	PER ARCH COMMENTS
▲	PER ARCH COMMENTS

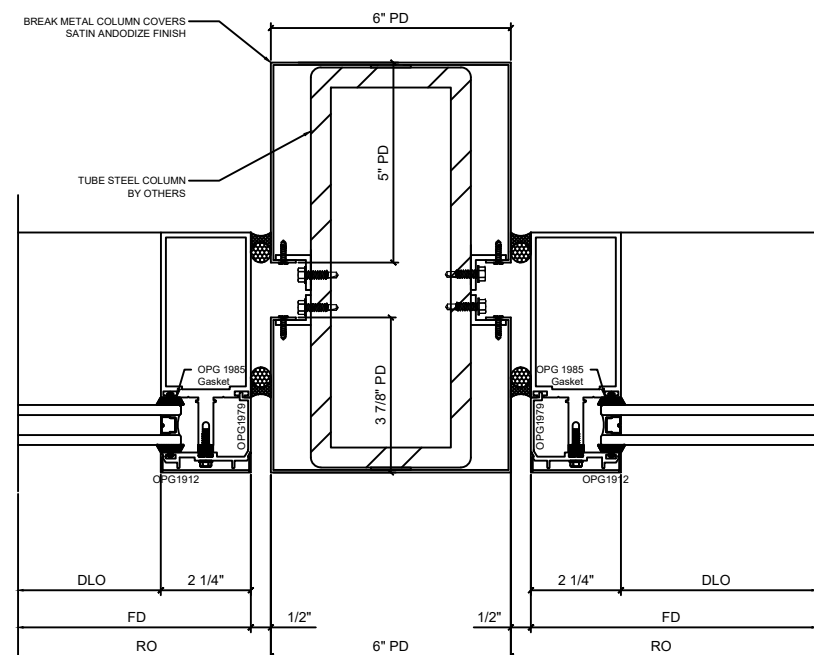
<b>PROJECT TEAM INFORMATION</b>	
GENERAL CONTRACTOR	HAYDON BUILDING CORPORATION
ARCHITECT	DOUGLAS ARCHITECTURE AND PLANNING
OWNER	SOUTH EAST VALLEY REGIONAL ASSOC. OF REALTORS

<b>PROJECT INFORMATION</b>	
<b>SEVRAR AVION CENTER</b>	
PROJECT ADDRESS	1733 E NORTHRUP BLVD. CHANDLER, AZ 85286

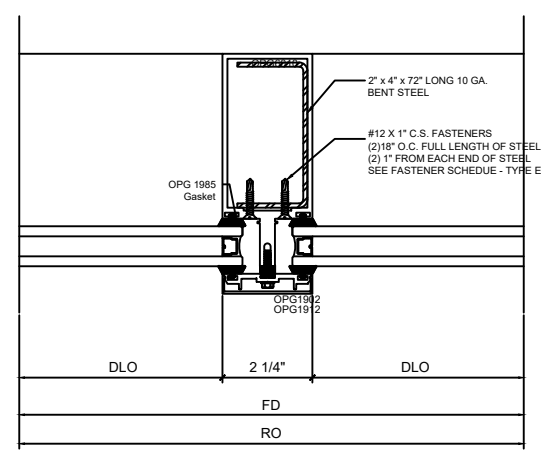
DRAWN BY	C. HAMBLIN/C. GLEGHORN
CHECKED BY	C. GLEGHORN
SCALE	<b>2-1/2" = 1'-0"</b>
DATE	<b>9/8/2017</b>
SHEET	<b>D7</b>



**1 CW JAMB DETAIL**  
 SCALE: 2-1/2" = 1'-0"



**2 CW INT. JAMB DETAIL**  
 SCALE: 2-1/2" = 1'-0"



**3 CW INT. VERT. DETAIL**  
 SCALE: 2-1/2" = 1'-0"

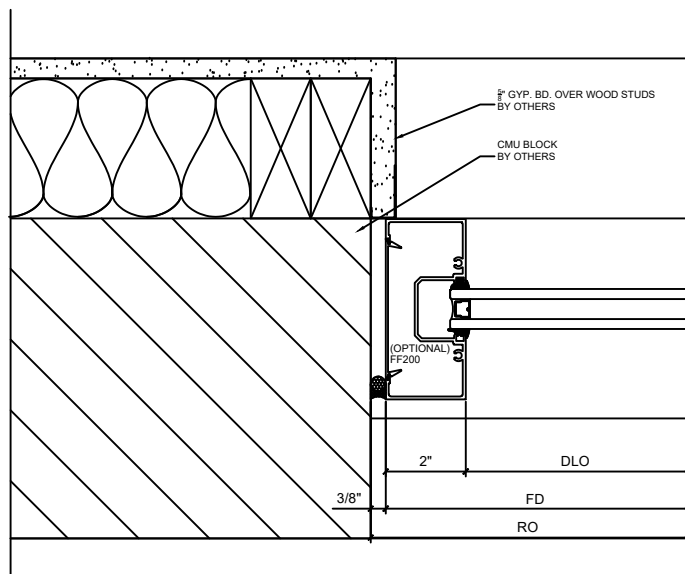


This document and the disclosure herein are provided with the understanding and agreement that the recipient will not reproduce same or manufacture using the disclosure, or the information contained herein without prior written permission of ARIZONA GLASS SPECIALISTS and that all rights to the document and the exclusive and confidential property of ARIZONA GLASS SPECIALISTS.

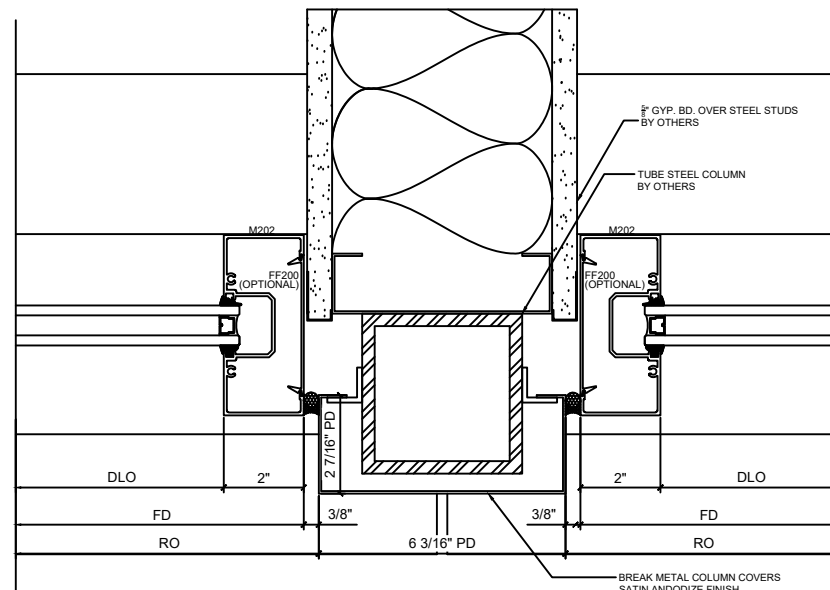
ARIZONA GLASS SPECIALISTS will not be responsible for any such errors omission and/or work that accrue from the use of these drawings by other trades.

**REVISIONS**

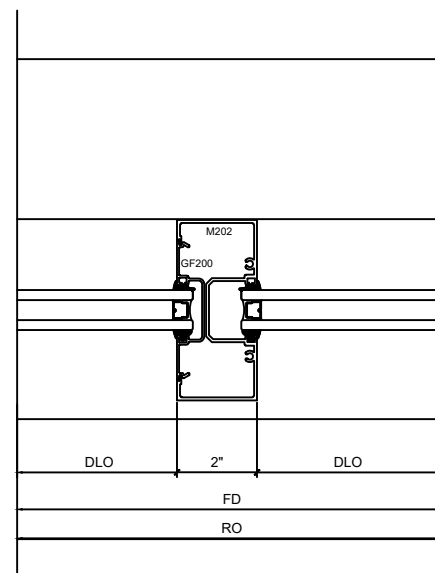
▲	PER ARCH COMMENTS
▲	PER ARCH COMMENTS



**1 SF JAMB DETAIL**  
 SCALE: 2-1/2" = 1'-0"



**2 SF INT. JAMB DETAIL**  
 SCALE: 2-1/2" = 1'-0"



**3 SF INT. VERT. DETAIL**  
 SCALE: 2-1/2" = 1'-0"

**PROJECT TEAM INFORMATION**

<b>GENERAL CONTRACTOR</b>	HAYDON BUILDING CORPORATION
<b>ARCHITECT</b>	DOUGLAS ARCHITECTURE AND PLANNING
<b>OWNER</b>	SOUTH EAST VALLEY REGIONAL ASSOC. OF REALTORS

**PROJECT INFORMATION**

**SEVRAR AVION CENTER**  
 PROJECT ADDRESS  
 1733 E NORTHRUP BLVD.  
 CHANDLER, AZ 85286

DRAWN BY  
 C. HAMBLIN/C. GLEGHORN

CHECKED BY  
 C. GLEGHORN

SCALE  
**2-1/2" = 1'-0"**

DATE  
**9/8/2017**

SHEET  
**D9**

This document and the disclosure herein are provided with the understanding and agreement that the recipient will not reproduce same or manufacture using the document, or the information contained herein without prior written permission of ARIZONA GLASS SPECIALISTS and that all rights to the document and the exclusive and confidential property of ARIZONA GLASS SPECIALISTS.

ARIZONA GLASS SPECIALISTS will not be responsible for any such errors omission and/or work that accrue from the use of these drawing by other trades.

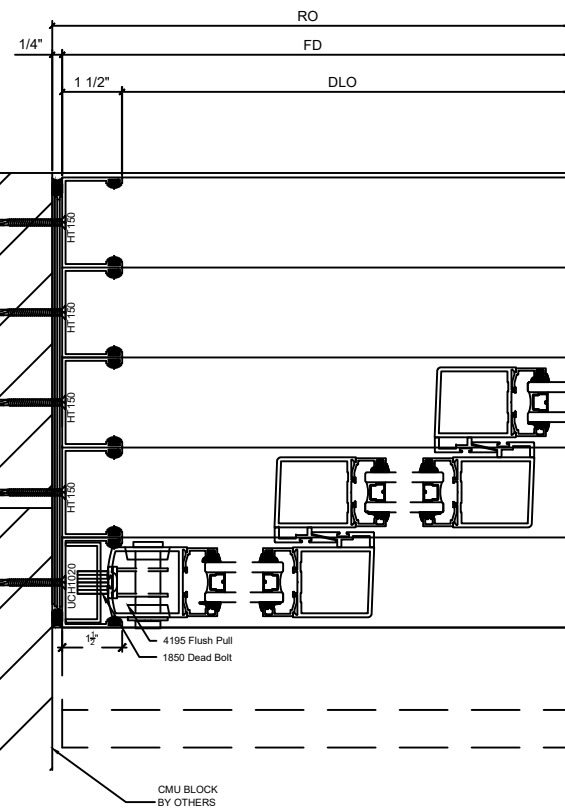
**REVISIONS**

▲	PER ARCH COMMENTS
▲	PER ARCH COMMENTS

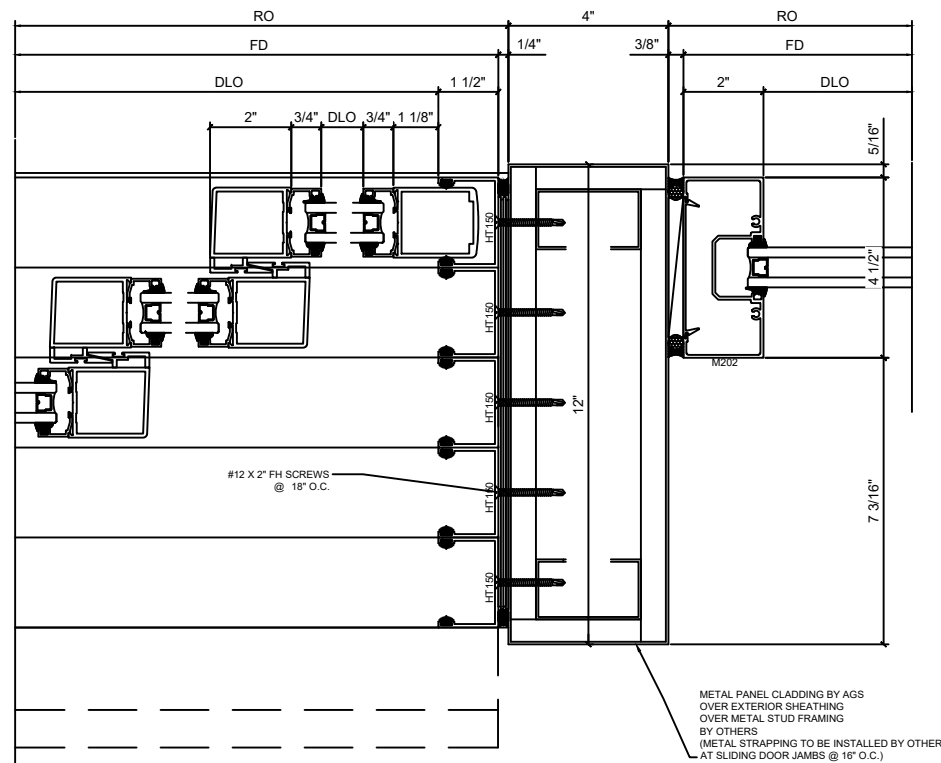
<b>PROJECT TEAM INFORMATION</b>	<b>GENERAL CONTRACTOR</b>
	HAYDON BUILDING CORPORATION
	<b>ARCHITECT</b>
	DOUGLAS ARCHITECTURE AND PLANNING
<b>OWNER</b>	SOUTH EAST VALLEY REGIONAL ASSOC. OF REALTORS

<b>PROJECT INFORMATION</b>	<b>SEVRAR AVION CENTER</b>
	<b>PROJECT ADDRESS</b> 1733 E NORTHRUP BLVD. CHANDLER, AZ 85286

DRAWN BY C. HAMBLIN/C. GLEGHORN
CHECKED BY C. GLEGHORN
SCALE <b>2-1/2" = 1'-0"</b>
DATE <b>9/8/2017</b>
SHEET <b>D10</b>



**1 DOOR SLIDER PLAN DETAIL**  
 SCALE: 2-1/2" = 1'-0"



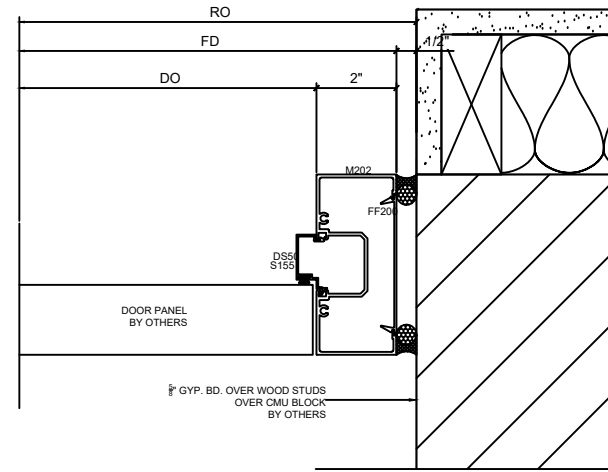
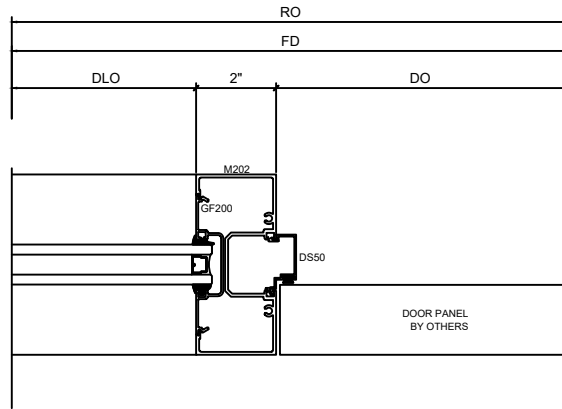
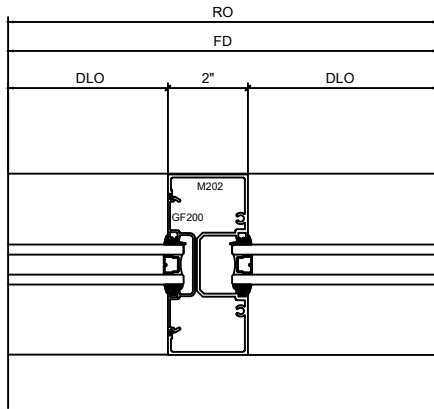
**2 SF JAMB DETAIL**  
 SCALE: 2-1/2" = 1'-0"

The document and the drawings herein are provided with the understanding and agreement that the recipient will not reproduce same or manufacture using the document, or the information contained herein without prior written permission of ARIZONA GLASS SPECIALISTS and that all rights to the document and the exclusive and confidential property of ARIZONA GLASS SPECIALISTS.

ARIZONA GLASS SPECIALISTS will not be responsible for any such errors and/or work that accrue from the use of these drawings by other trades.

**REVISIONS**

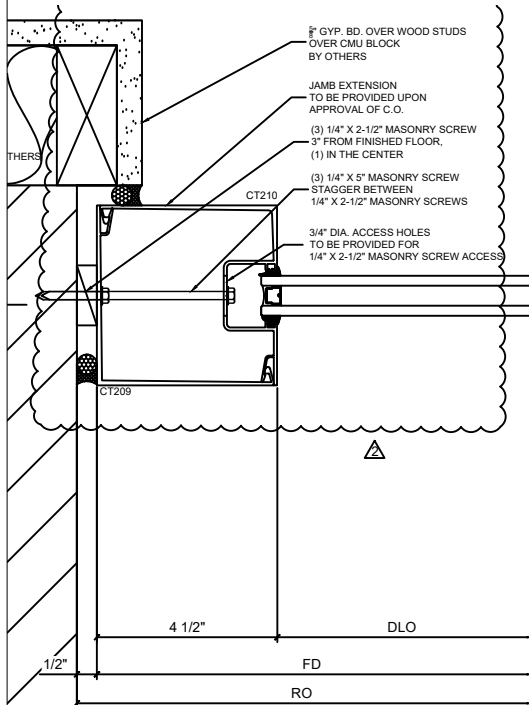
▲	PER ARCH COMMENTS
▲	PER ARCH COMMENTS



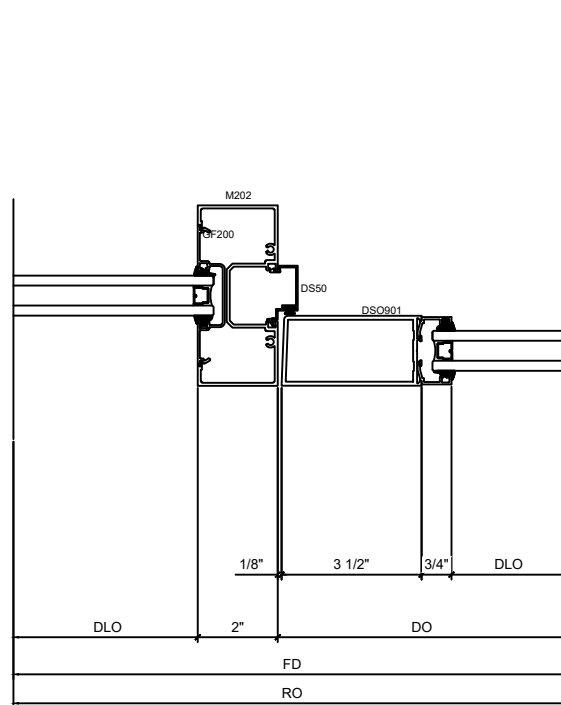
**1 SF INT. VERT. DETAIL**  
 SCALE: 2-1/2" = 1'-0"

**2 SF DOOR LEFT JAMB DETAIL**  
 SCALE: 2-1/2" = 1'-0"

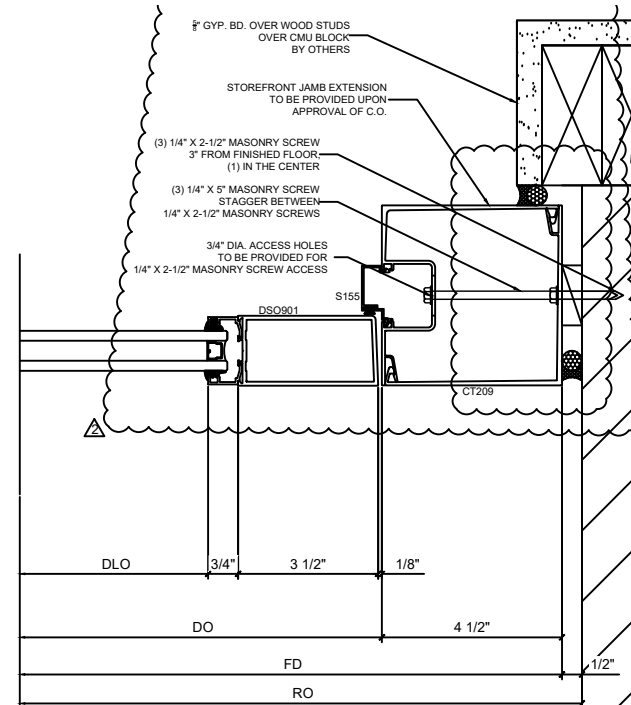
**3 SF DOOR RIGHT JAMB DETAIL**  
 SCALE: 2-1/2" = 1'-0"



**4 SF JAMB DETAIL**  
 SCALE: 2-1/2" = 1'-0"



**5 SF DOOR LEFT JAMB DETAIL**  
 SCALE: 2-1/2" = 1'-0"



**6 SF DOOR RIGHT JAMB DETAIL**  
 SCALE: 2-1/2" = 1'-0"

**PROJECT TEAM INFORMATION**

<b>GENERAL CONTRACTOR</b>	HAYDON BUILDING CORPORATION
<b>ARCHITECT</b>	DOUGLAS ARCHITECTURE AND PLANNING
<b>OWNER</b>	SOUTH EAST VALLEY REGIONAL ASSOC. OF REALTORS

**PROJECT INFORMATION**

<b>SEVRAR AVION CENTER</b>
<b>PROJECT ADDRESS</b>
1733 E NORTHRUP BLVD. CHANDLER, AZ 85286

<b>DRAWN BY</b>	C. HAMBLIN/C. GLEGHORN
<b>CHECKED BY</b>	C. GLEGHORN
<b>SCALE</b>	2-1/2" = 1'-0"
<b>DATE</b>	9/8/2017
<b>SHEET</b>	<b>D11</b>



The document and the disclosure herein are provided with the understanding and agreement that the recipient will not reproduce same or manufacture using the document, or the information contained herein without prior written permission of ARIZONA GLASS SPECIALISTS and that all rights to the document and the exclusive and confidential property of ARIZONA GLASS SPECIALISTS.

ARIZONA GLASS SPECIALISTS will not be responsible for any such errors omissions and/or work that accrue from the use of these drawings by other trades.

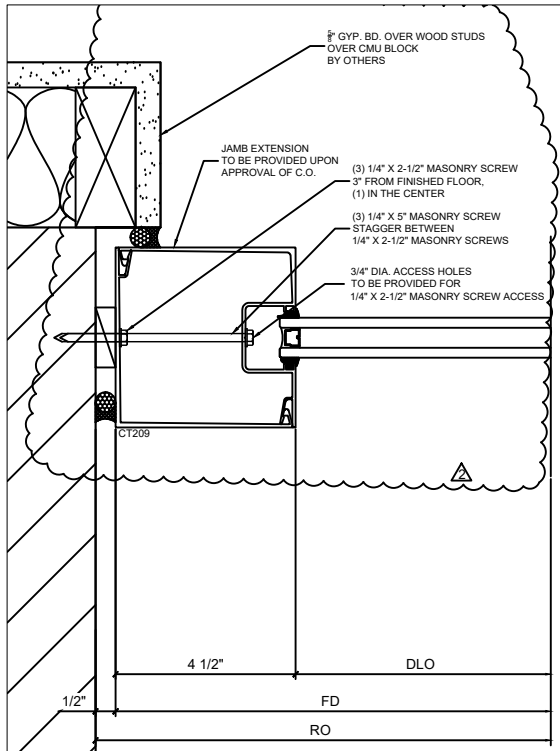
**REVISIONS**

▲	PER ARCH COMMENTS
▲	PER ARCH COMMENTS

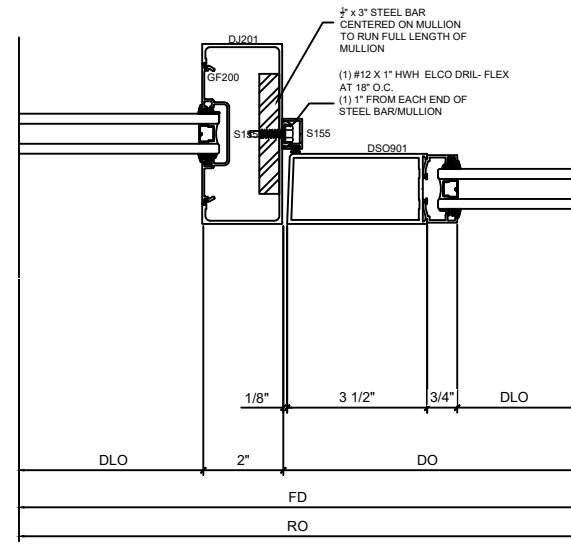
<b>PROJECT TEAM INFORMATION</b>	
GENERAL CONTRACTOR	HAYDON BUILDING CORPORATION
ARCHITECT	DOUGLAS ARCHITECTURE AND PLANNING
OWNER	SOUTH EAST VALLEY REGIONAL ASSOC. OF REALTORS

<b>PROJECT INFORMATION</b>	
<b>SEVRAR AVION CENTER</b>	
PROJECT ADDRESS	1733 E NORTHRUP BLVD. CHANDLER, AZ 85286

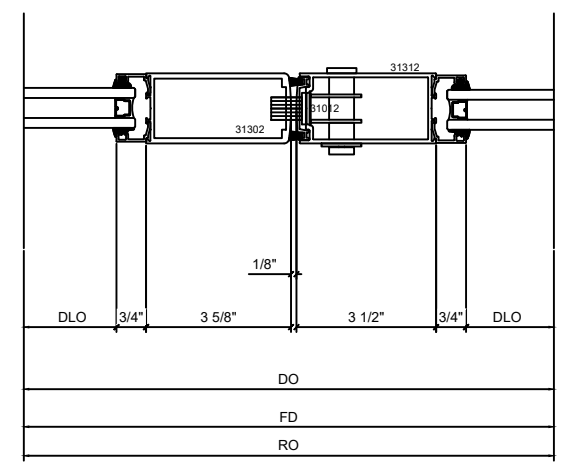
DRAWN BY	C. HAMBLIN/C. GLEGHORN
CHECKED BY	C. GLEGHORN
SCALE	<b>2-1/2" = 1'-0"</b>
DATE	<b>9/8/2017</b>
SHEET	<b>D11A</b>



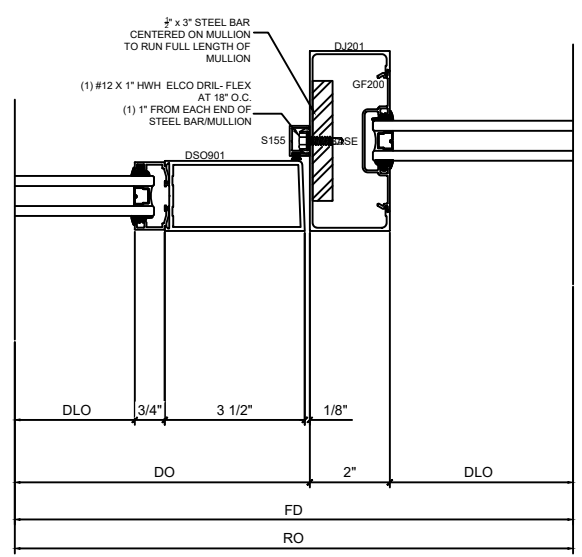
**1 SF JAMB DETAIL**  
 SCALE: 2-1/2" = 1'-0"



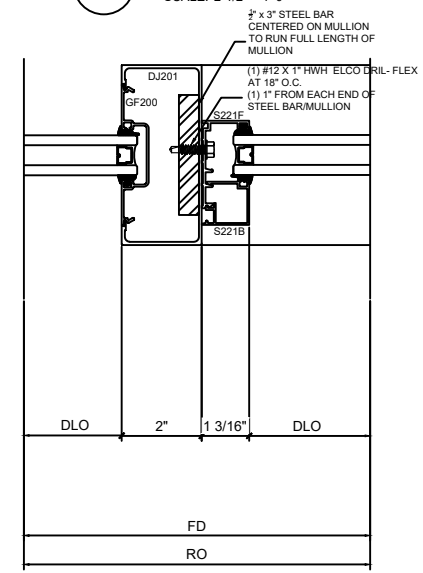
**2 SF DOOR LEFT JAMB DETAIL**  
 SCALE: 2-1/2" = 1'-0"



**3 SF DOOR INT. DETAIL**  
 SCALE: 2-1/2" = 1'-0"



**4 SF DOOR RIGHT JAMB DETAIL**  
 SCALE: 2-1/2" = 1'-0"



**5 SF TRANSOM VERT. DETAIL**  
 SCALE: 2-1/2" = 1'-0"

The document and the disclosure herein are provided with the understanding and agreement that the recipient will not reproduce same or manufacture using the document, or the information contained herein without prior written permission of ARIZONA GLASS SPECIALISTS and that all rights to the document and the exclusive and confidential property of ARIZONA GLASS SPECIALISTS.

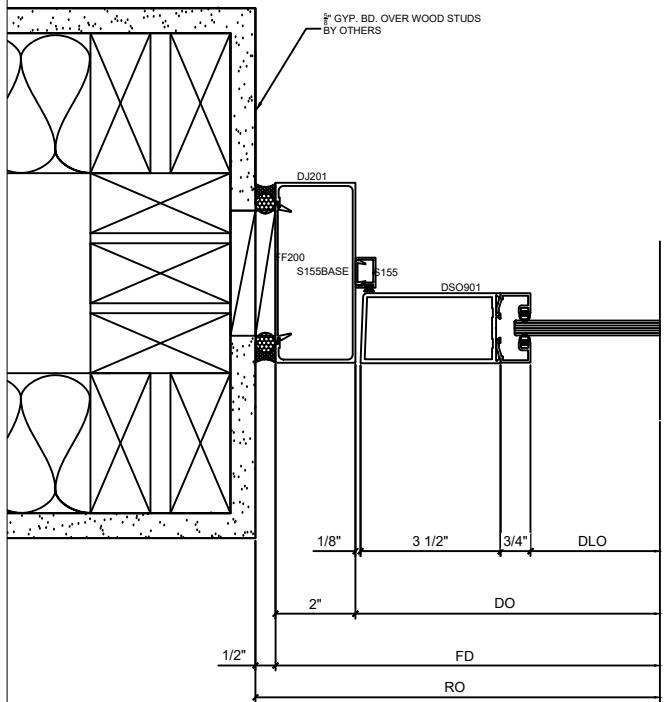
ARIZONA GLASS SPECIALISTS will not be responsible for any such errors omission and/or work that accrue from the use of these drawings by other trades.

REVISIONS	
▲	PER ARCH COMMENTS
▲	PER ARCH COMMENTS

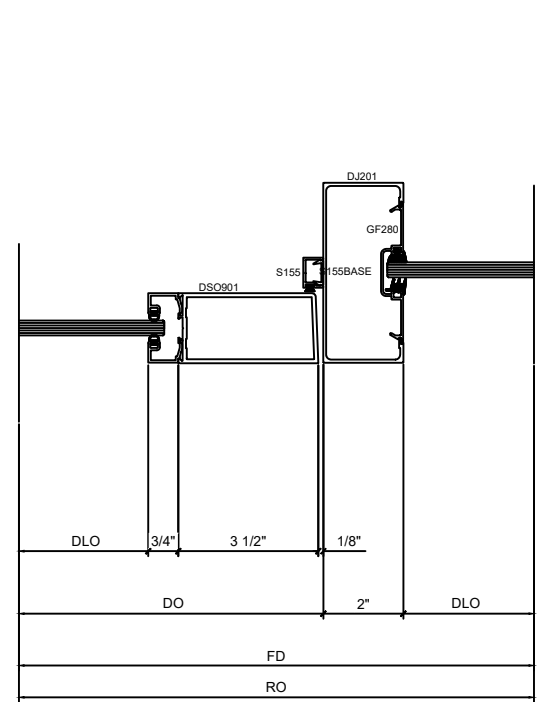
PROJECT TEAM INFORMATION	
GENERAL CONTRACTOR	HAYDON BUILDING CORPORATION
ARCHITECT	DOUGLAS ARCHITECTURE AND PLANNING
OWNER	SOUTH EAST VALLEY REGIONAL ASSOC. OF REALTORS

PROJECT INFORMATION	
SEVRAR AVION CENTER	
PROJECT ADDRESS	1733 E NORTHRUP BLVD. CHANDLER, AZ 85286

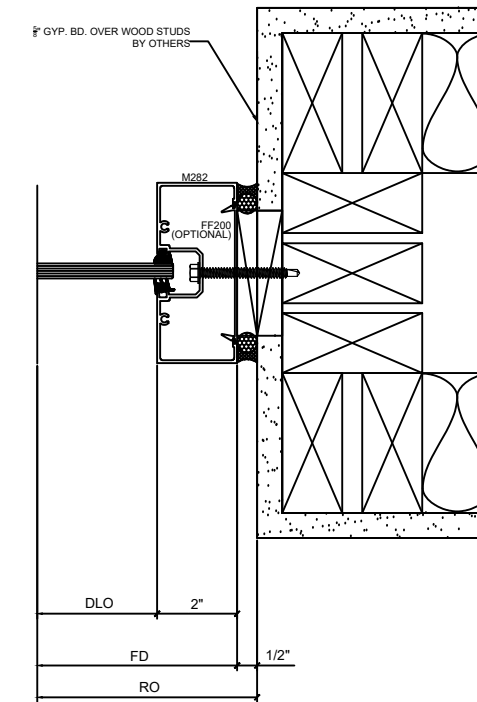
DRAWN BY	C. HAMBLIN/C. GLEGHORN
CHECKED BY	C. GLEGHORN
SCALE	<b>2-1/2" = 1'-0"</b>
DATE	<b>9/8/2017</b>
SHEET	<b>D12</b>



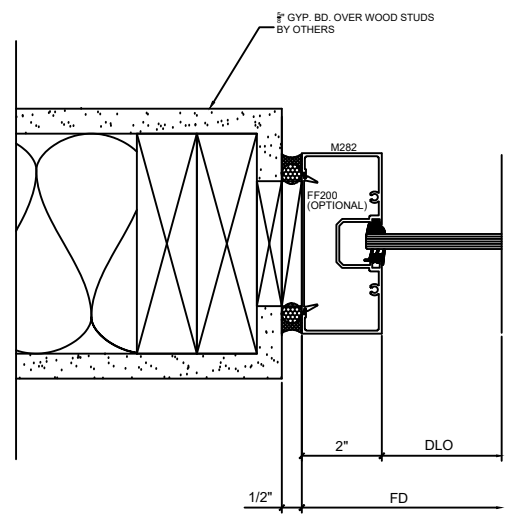
**1** SF DOOR LEFT JAMB DETAIL  
 SCALE: 2-1/2" = 1'-0"



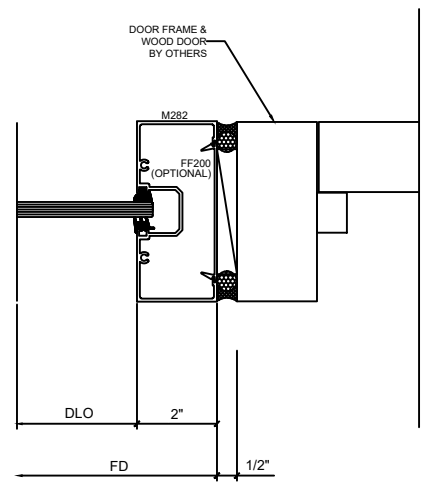
**2** SF DOOR RIGHT JAMB DETAIL  
 SCALE: 2-1/2" = 1'-0"



**3** SF JAMB DETAIL  
 SCALE: 2-1/2" = 1'-0"



**4** SF JAMB DETAIL  
 SCALE: 2-1/2" = 1'-0"



**5** SF JAMB DETAIL  
 SCALE: 2-1/2" = 1'-0"

This document and the drawings herein are provided with the understanding and agreement that the recipient will not reproduce same or manufacture using the document, or the information contained herein without prior written permission of ARIZONA GLASS SPECIALISTS and that all rights to the document and the exclusive and confidential property of ARIZONA GLASS SPECIALISTS.

ARIZONA GLASS SPECIALISTS will not be responsible for any such errors omission and/or work that occurs from the use of these drawings by other trades.

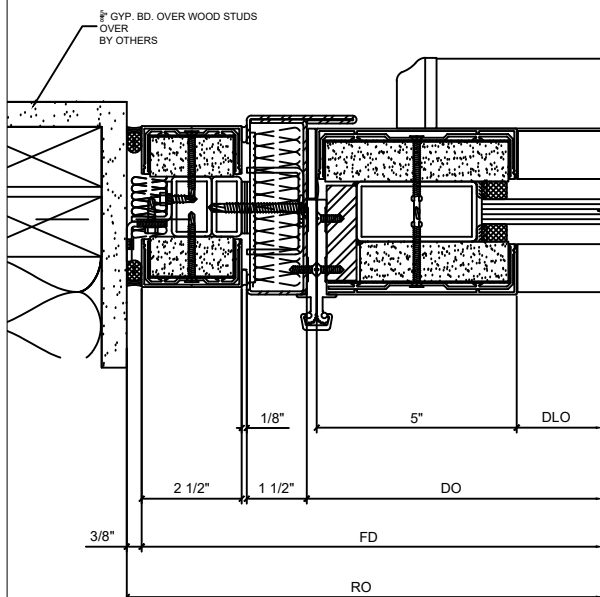
**REVISIONS**

▲	PER ARCH COMMENTS
▲	PER ARCH COMMENTS

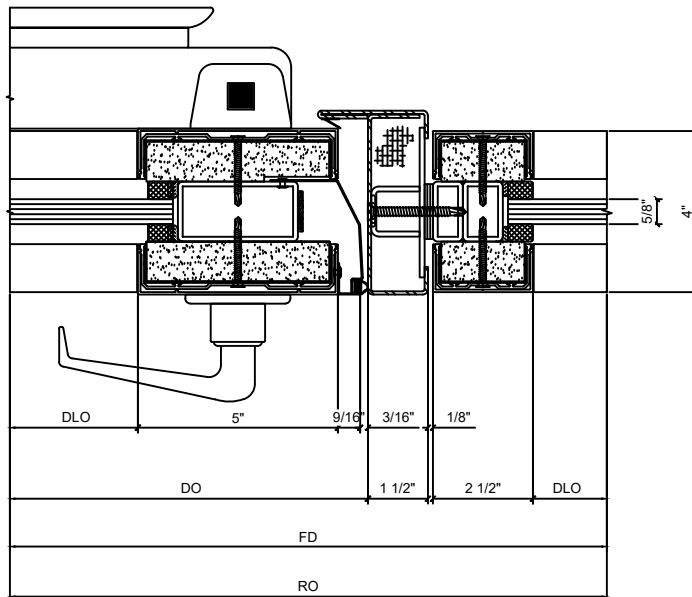
<b>PROJECT TEAM INFORMATION</b>	
GENERAL CONTRACTOR	HAYDON BUILDING CORPORATION
ARCHITECT	DOUGLAS ARCHITECTURE AND PLANNING
OWNER	SOUTH EAST VALLEY REGIONAL ASSOC. OF REALTORS

<b>PROJECT INFORMATION</b>	
<b>SEVRAR AVION CENTER</b>	
PROJECT ADDRESS	1733 E NORTHRUP BLVD. CHANDLER, AZ 85286

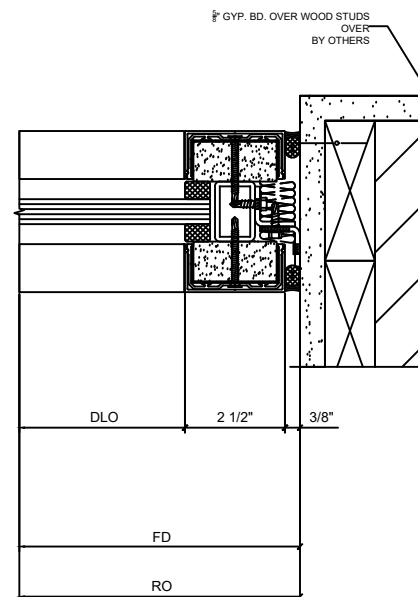
DRAWN BY	C. HAMBLIN/C. GLEGHORN
CHECKED BY	C. GLEGHORN
SCALE	<b>2-1/2"=1'-0"</b>
DATE	<b>9/8/2017</b>
SHEET	<b>D13</b>



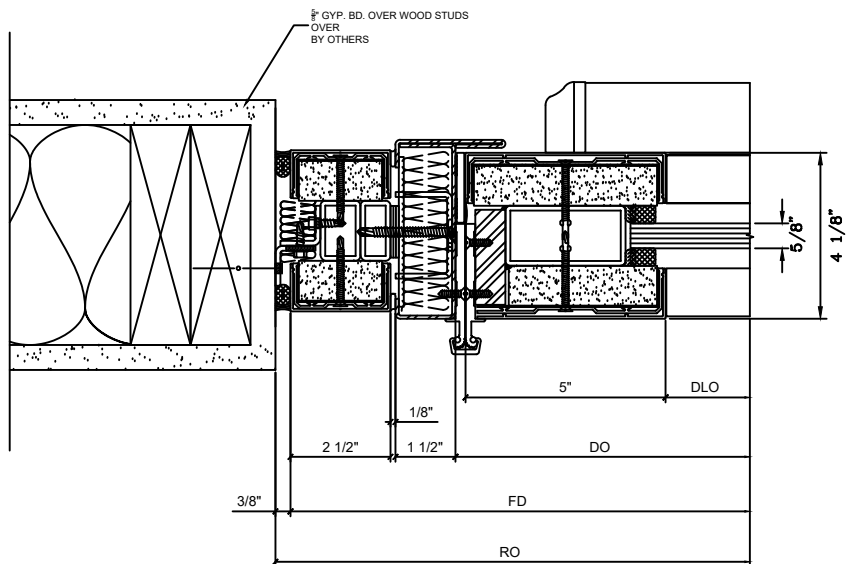
**1** F.R. FRAME DOOR LEFT JAMB DETAIL  
 SCALE: 2-1/2" = 1'-0"



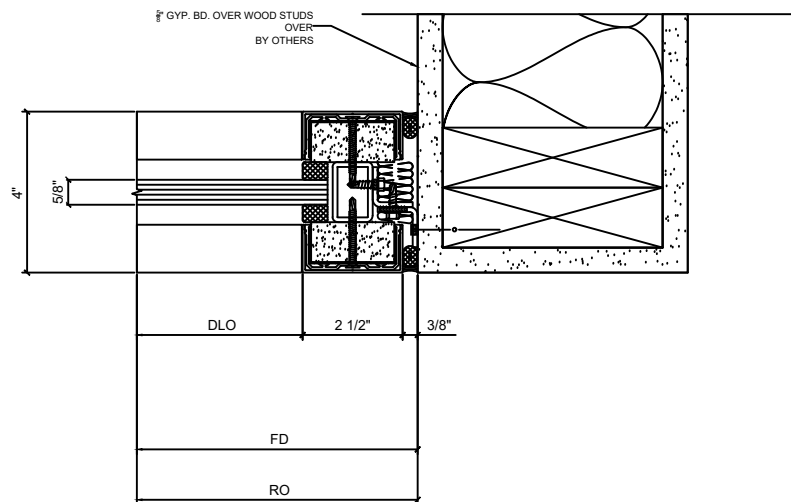
**2** F.R. FRAME DOOR RIGHT JAMB DETAIL  
 SCALE: 2-1/2" = 1'-0"



**3** F.R. FRAME JAMB DETAIL  
 SCALE: 2-1/2" = 1'-0"



**4** F.R. FRAME DOOR LEFT JAMB DETAIL  
 SCALE: 2-1/2" = 1'-0"



**5** F.R. FRAME JAMB DETAIL  
 SCALE: 2-1/2" = 1'-0"